

MRP-S25 Polyclonal Antibody

Catalog No: #41181

Package Size: #41181-1 50ul #41181-2 100ul

Orders: order@signalwayantibody.comSupport: tech@signalwayantibody.com

Description

Product Name	MRP-S25 Polyclonal Antibody
Host Species	Rabbit
Clonality	Polyclonal
Purification	The antibody was affinity-purified from rabbit antiserum by affinity-chromatography using epitope-specific immunogen.
Applications	WB ELISA
Species Reactivity	Hu Ms Rt
Specificity	MRP-S25 Polyclonal Antibody detects endogenous levels of MRP-S25 protein.
Immunogen Type	peptide
Immunogen Description	Synthesized peptide derived from the C-terminal region of human MRP-S25.
Target Name	MRP-S25
Other Names	MRPS25; RPMS25; 28S ribosomal protein S25; mitochondrial; MRP-S25; S25mt
Accession No.	Swiss-Prot: P82663NCBI Gene ID: 64432
Uniprot	P82663
GeneID	64432;
SDS-PAGE MW	20kd
Concentration	1mg/ml
Formulation	Liquid in PBS containing 50% glycerol, 0.5% BSA and 0.02% sodium azide.
Storage	Store at -20°C/1 year

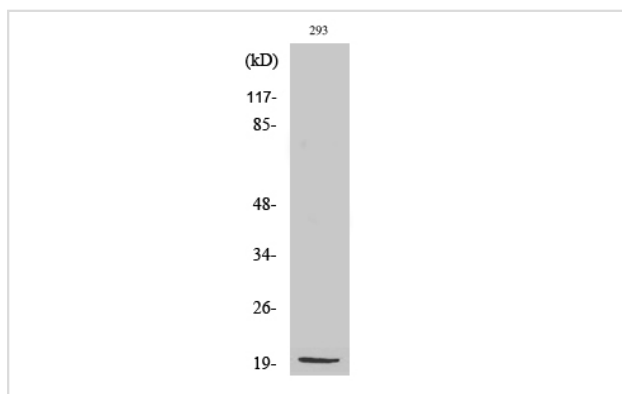
Application Details

Western Blot: 1/500 - 1/2000.

ELISA: 1/40000.

Not yet tested in other applications.

Images



Western Blot analysis of 293 cells using MRP-S25 Polyclonal Antibody

Note: This product is for in vitro research use only