

MSK1 Polyclonal Antibody

Catalog No: #41183

Package Size: #41183-1 50ul #41183-2 100ul

Orders: order@signalwayantibody.comSupport: tech@signalwayantibody.com

Description

Product Name	MSK1 Polyclonal Antibody
Host Species	Rabbit
Clonality	Polyclonal
Purification	The antibody was affinity-purified from rabbit antiserum by affinity-chromatography using epitope-specific immunogen.
Applications	WB IHC ELISA
Species Reactivity	Hu Ms Mk
Specificity	MSK1 Polyclonal Antibody detects endogenous levels of MSK1 protein.
Immunogen Type	peptide
Immunogen Description	Synthesized peptide derived from human MSK1 around the non-phosphorylation site of S360.
Target Name	MSK1
Other Names	RPS6KA5; MSK1; Ribosomal protein S6 kinase alpha-5; S6K-alpha-5; 90 kDa ribosomal protein S6 kinase 5; Nuclear mitogen- and stress-activated protein kinase 1; RSK-like protein kinase; RSKL
Accession No.	Swiss-Prot: O75582NCBI Gene ID: 9252
Uniprot	O75582
GeneID	9252;
SDS-PAGE MW	90kd
Concentration	1mg/ml
Formulation	Liquid in PBS containing 50% glycerol, 0.5% BSA and 0.02% sodium azide.
Storage	Store at -20°C/1 year

Application Details

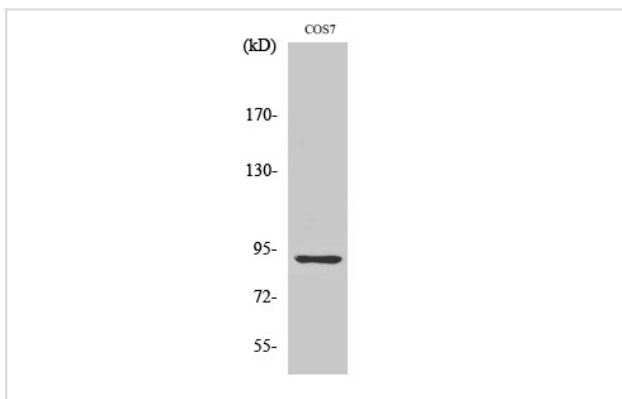
Western Blot: 1/500 - 1/2000.

Immunohistochemistry: 1/100 - 1/300.

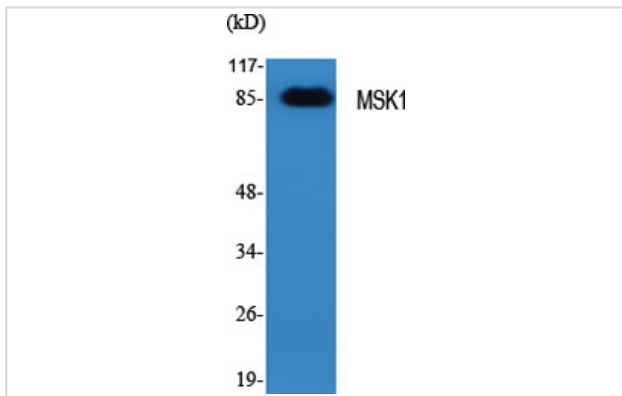
ELISA: 1/10000.

Not yet tested in other applications.

Images



Western Blot analysis of COS7 cells using MSK1 Polyclonal Antibody



Western Blot analysis of various cells using MSK1 Polyclonal Antibody

Note: This product is for in vitro research use only