

## Leupeptin Hemisulfate

Catalog No: #S6564

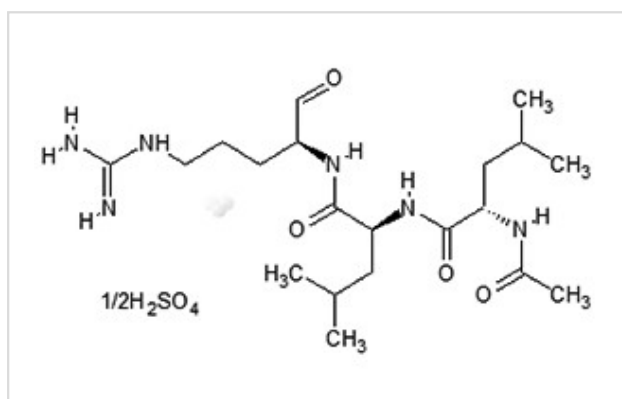
Orders: order@signalwayantibody.com

Support: tech@signalwayantibody.com

## Description

Product Name	Leupeptin Hemisulfate
Brief Description	Inhibitors
Purification	95.00%
Target Name	Cysteine Protease inhibitor; Serine Protease inhibitor
Calculated MW	475.59
Formulation	C <sub>20</sub> H <sub>38</sub> N <sub>6</sub> O <sub>4</sub> ·1/2H <sub>2</sub> SO <sub>4</sub>
Storage	3 years -20°C powder; 2 years -80°C in solvent;

## Images



## Product Description

## Research

Area:CancerSMILES:CC(C)C[C@@H](C(=O)N[C@@H](CC(C)C)C(=O)N[C@@H](CCC[NH+]=C(N)N)C(=O)NC(=O)CPathways:Proteases/ProteasomeReceptor:Cysteine protease; Serine ProteaseBoiling pt:Melting pt:Solubility:Ethanol: 95 mg/mL (199.75 mM); Water: 95 mg/mL (199.75 mM); DMSO: 95 mg/mL warmed (199.75 mM)Appearance:Remark:For obtaining a higher solubility , please warm the tube at 37 °C and shake it in the ultrasonic bath for a while.Stock solution can be stored below -20 °C for several month.

## References

1. Aoyagi T, et al. J Antibiot (Tokyo). 1969, 22(11), 558-568.

Note: This product is for in vitro research use only