

MyD88 Polyclonal Antibody

Catalog No: #41191

Package Size: #41191-1 50ul #41191-2 100ul

Orders: order@signalwayantibody.comSupport: tech@signalwayantibody.com

Description

Product Name	MyD88 Polyclonal Antibody
Host Species	Rabbit
Clonality	Polyclonal
Purification	The antibody was affinity-purified from rabbit antiserum by affinity-chromatography using epitope-specific immunogen.
Applications	WB IHC ELISA
Species Reactivity	Hu Ms Rt
Specificity	MyD88 Polyclonal Antibody detects endogenous levels of MyD88 protein.
Immunogen Type	peptide
Immunogen Description	Synthesized peptide derived from the Internal region of human MyD88.
Target Name	MyD88
Other Names	MYD88; Myeloid differentiation primary response protein MyD88
Accession No.	Swiss-Prot: Q99836NCBI Gene ID: 4615
Uniprot	Q99836
GeneID	4615;
SDS-PAGE MW	33kd
Concentration	1mg/ml
Formulation	Liquid in PBS containing 50% glycerol, 0.5% BSA and 0.02% sodium azide.
Storage	Store at -20°C/1 year

Application Details

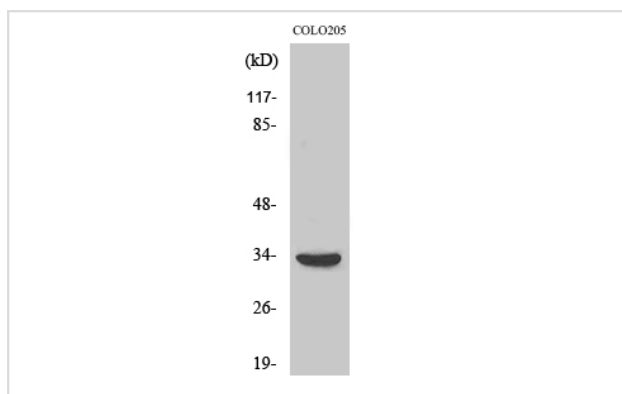
Western Blot: 1/500 - 1/2000.

Immunohistochemistry: 1/100 - 1/300. Immunocytochemistry: 1/200 - 1/1000.

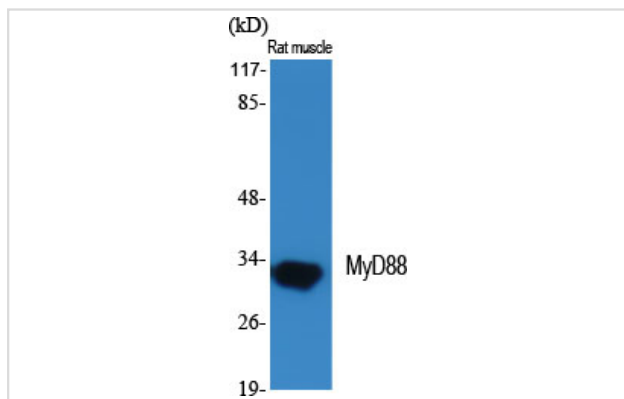
ELISA: 1/20000.

Not yet tested in other applications.

Images



Western Blot analysis of COLO205 cells using MyD88 Polyclonal Antibody



Western Blot analysis of RAT-MUSCLE cells using MyD88 Polyclonal Antibody

Note: This product is for in vitro research use only