

## Ospemifene

Catalog No: #S6620

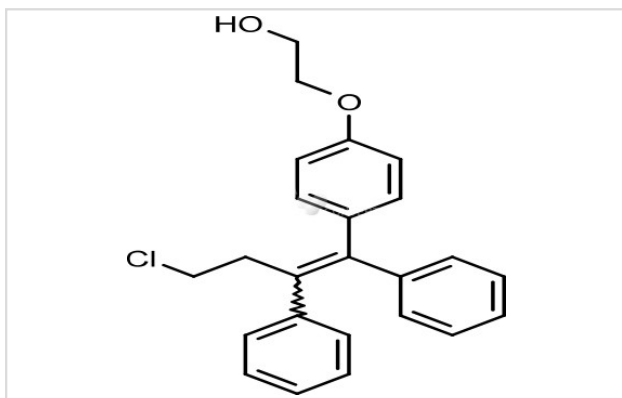
Orders: order@signalwayantibody.com

Support: tech@signalwayantibody.com

## Description

Product Name	Ospemifene
Brief Description	Inhibitors
Purification	99.00%
Target Name	Estrogen/progestogen Receptor inhibitor
Calculated MW	378.89
Formulation	C <sub>24</sub> H <sub>23</sub> ClO <sub>2</sub>
Storage	3 years -20°C powder; 2 years -80°C in solvent;

## Images



## Product Description

Research Area:Endocrine

systemSMILES:C1=CC=C(C=C1)/C(=C(/C2=CC=CC=C2)\C3=CC=C(C=C3)OCCO)/CCCIPathways:Endocrinology/HormonesReceptor:ERBoiling pt:Melting pt:Solubility:Ethanol: 71 mg/mL warmed (187.38 mM); DMSO: 75 mg/mL (197.94 mM)Appearance:Remark:For obtaining a higher solubility , please warm the tube at 37 °C and shake it in the ultrasonic bath for a while.Stock solution can be stored below -20 °C for several month.

## References

- 1.Constantine GD, Kagan R, Miller PD.  
Menopause. 2016 Mar 29. [Epub ahead of print]

Note: This product is for in vitro research use only