

Rolipram

Catalog No: #S6644

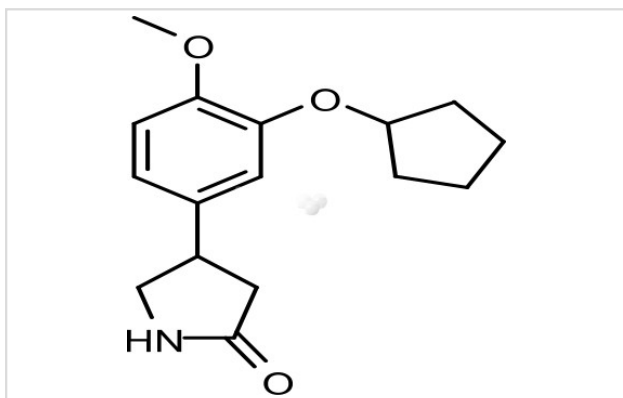
Orders: order@signalwayantibody.com

Support: tech@signalwayantibody.com

Description

Product Name	Rolipram
Brief Description	Inhibitors
Purification	99.00%
Target Name	PDE inhibitor
Calculated MW	275.34
Formulation	C16H21NO3
Storage	3 years -20°C powder; 2 years -80°C in solvent;

Images



Product Description

Research Area: Metabolism system
SMILES: COC1=C(OC2CCCC2)C=C(C=C1)C1CNC(=O)C1
Pathways: Metabolism
Receptor: PDE4B; PDE4DB
Boiling pt: Melting pt: Solubility: Ethanol: 55 mg/mL (199.75 mM); DMSO: 55 mg/mL (199.75 mM)
Appearance: White Powder
Remark: For obtaining a higher solubility, please warm the tube at 37 °C and shake it in the ultrasonic bath for a while. Stock solution can be stored below -20 °C for several months.

References

1. Soares LM, et al. Neuroscience. 2016 Apr 4. pii: S0306-4522(16)30049-5.

Note: This product is for in vitro research use only