

## S- (+)-Rolipram

Catalog No: #S6649

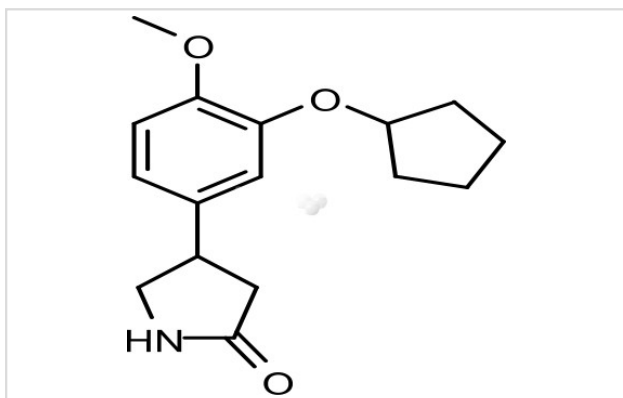
Orders: order@signalwayantibody.com

Support: tech@signalwayantibody.com

## Description

Product Name	S- (+)-Rolipram
Brief Description	Inhibitors
Purification	/
Target Name	PDE inhibitor
Calculated MW	275.34
Formulation	C16H21NO3
Storage	3 years -20°C powder;2 years -80°C in solvent;

## Images



## Product Description

Research Area:Metabolism systemSMILES:COC1=C(OC2CCCC2)C=C(C=C1)[C@H]1CNC(=O)C1

|r,c:2,11,13|Pathways:MetabolismReceptor:PDE4Boiling pt:Melting pt:Solubility:DMSO:55 mg/mL (199.75 mM)Ethanol:55 mg/mL (199.75 mM)Water:

Note: This product is for in vitro research use only