

## UBE2B antibody

Catalog No: #22642

Orders: order@signalwayantibody.com

Support: tech@signalwayantibody.com

## Description

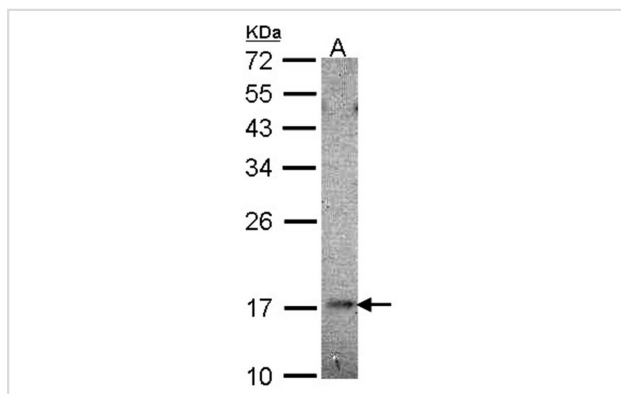
Product Name	UBE2B antibody
Host Species	Rabbit
Clonality	Polyclonal
Purification	Purified by antigen-affinity chromatography.
Applications	WB
Species Reactivity	Hu
Immunogen Type	Recombinant protein
Immunogen Description	Recombinant protein fragment contain a sequence corresponding to a region within amino acids 1 and 122 of UBE2B
Target Name	UBE2B
Accession No.	Swiss-Prot:P63146Gene ID:7320
Uniprot	P63146
GeneID	7320;
Concentration	1mg/ml
Formulation	Supplied in 1XPBS, 1%BSA, 20% Glycerol (pH7.0). 0.01% Thimerosal was added as a preservative.
Storage	Store at -20°C for long term preservation (recommended). Store at 4°C for short term use.

## Application Details

Predicted MW: 17kd

Western blotting: 1:500-1:3000

## Images



Sample (30 ug of whole cell lysate)

A: HeLa

12% SDS PAGE

UBE2B antibody diluted at 1: 1000

## Background

The modification of proteins with ubiquitin is an important cellular mechanism for targeting abnormal or short-lived proteins for degradation. Ubiquitination involves at least three classes of enzymes: ubiquitin-activating enzymes, or E1s, ubiquitin-conjugating enzymes, or E2s, and ubiquitin-protein ligases, or E3s. This gene encodes a member of the E2 ubiquitin-conjugating enzyme family. This enzyme is required for post-replicative DNA damage repair. Its protein sequence is 100% identical to the mouse, rat, and rabbit homologs, which indicates that this enzyme is

highly conserved in eukaryotic evolution. [provided by RefSeq]

---

Note: This product is for in vitro research use only