

## NDUFA4L2 Polyclonal Antibody

Catalog No: #41206

Package Size: #41206-1 50ul #41206-2 100ul

Orders: order@signalwayantibody.com

Support: tech@signalwayantibody.com

## Description

Product Name	NDUFA4L2 Polyclonal Antibody
Host Species	Rabbit
Clonality	Polyclonal
Purification	The antibody was affinity-purified from rabbit antiserum by affinity-chromatography using epitope-specific immunogen.
Applications	WB ELISA
Species Reactivity	Hu Ms
Specificity	NDUFA4L2 Polyclonal Antibody detects endogenous levels of NDUFA4L2 protein.
Immunogen Type	peptide
Immunogen Description	Synthesized peptide derived from the C-terminal region of human NDUFA4L2.
Target Name	NDUFA4L2
Other Names	NDUFA4L2; NADH dehydrogenase [ubiquinone] 1 alpha subcomplex subunit 4-like 2; NADH-ubiquinone oxidoreductase MLRQ subunit homolog; NUOMS
Accession No.	Swiss-Prot: Q9NRX3NCBI Gene ID: 56901
Uniprot	Q9NRX3
GeneID	56901;
SDS-PAGE MW	15kd
Concentration	1mg/ml
Formulation	Liquid in PBS containing 50% glycerol, 0.5% BSA and 0.02% sodium azide.
Storage	Store at -20°C/1 year

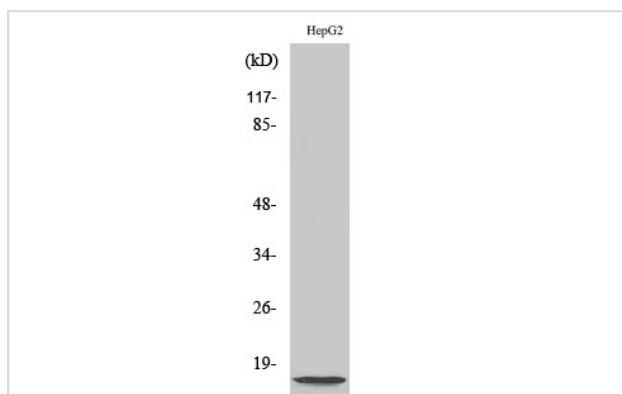
## Application Details

Western Blot: 1/500 - 1/2000.

ELISA: 1/20000.

Not yet tested in other applications.

## Images



Western Blot analysis of Jurkat cells using NDUFA4L2 Polyclonal Antibody

---

Note: This product is for in vitro research use only