

## NDUFB9 Polyclonal Antibody

Catalog No: #41208

Package Size: #41208-1 50ul #41208-2 100ul

Orders: [order@signalwayantibody.com](mailto:order@signalwayantibody.com)Support: [tech@signalwayantibody.com](mailto:tech@signalwayantibody.com)

## Description

Product Name	NDUFB9 Polyclonal Antibody
Host Species	Rabbit
Clonality	Polyclonal
Purification	The antibody was affinity-purified from rabbit antiserum by affinity-chromatography using epitope-specific immunogen.
Applications	WB IHC ELISA
Species Reactivity	Hu
Specificity	NDUFB9 Polyclonal Antibody detects endogenous levels of NDUFB9 protein.
Immunogen Type	peptide
Immunogen Description	Synthesized peptide derived from the Internal region of human NDUFB9.
Target Name	NDUFB9
Other Names	NDUFB9; LYRM3; UQOR22; NADH dehydrogenase [ubiquinone] 1 beta subcomplex subunit 9; Complex I-B22; CI-B22; LYR motif-containing protein 3; NADH-ubiquinone oxidoreductase B22 subunit
Accession No.	Swiss-Prot: Q9Y6M9NCBI Gene ID: 4715
Uniprot	Q9Y6M9
GeneID	4715;
SDS-PAGE MW	22kd
Concentration	1mg/ml
Formulation	Liquid in PBS containing 50% glycerol, 0.5% BSA and 0.02% sodium azide.
Storage	Store at -20°C/1 year

## Application Details

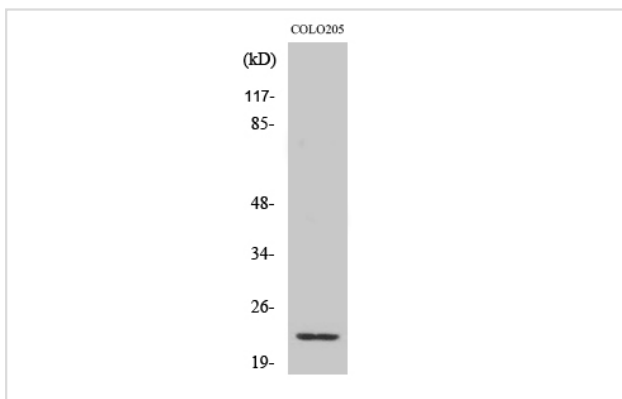
Western Blot: 1/500 - 1/2000.

Immunohistochemistry: 1/100 - 1/300.

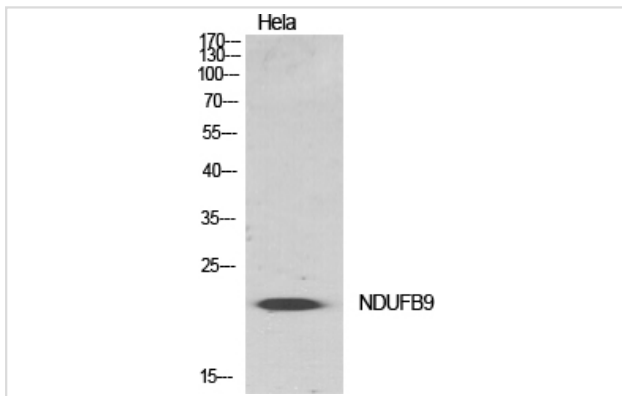
ELISA: 1/10000.

Not yet tested in other applications.

## Images



Western Blot analysis of 293 cells using NDUFB9 Polyclonal Antibody



Western Blot analysis of HELA cells using NDUFB9 Polyclonal Antibody

---

Note: This product is for in vitro research use only