

Endoxifen HCl

Catalog No: #S6827

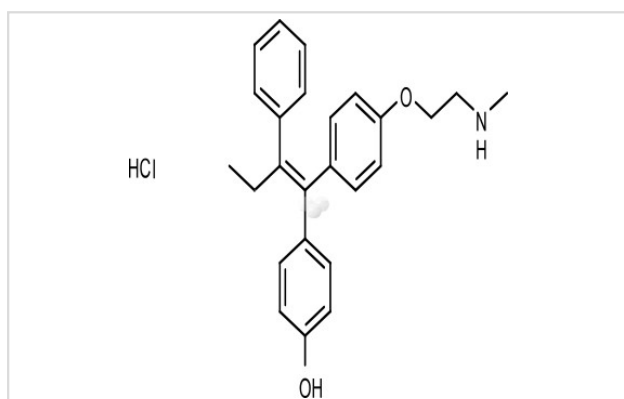
Orders: order@signalwayantibody.com

Support: tech@signalwayantibody.com

Description

Product Name	Endoxifen HCl
Brief Description	Inhibitors
Purification	98.00%
Target Name	Estrogen/progestogen Receptor antagonist
Calculated MW	409.95
Formulation	C25H28ClNO2
Storage	3 years -20°C powder; 2 years -80°C in solvent;

Images



Product Description

Research

Area: cancer
 SMILES: CC/C(=C(\C1=CC=C(C=C1)O)/C2=CC=C(C=C2)OCCNC)/C3=CC=CC=C3.Cl
 Pathways: Endocrinology/Hormones
 Receptor: ERB
 oling pt: Melting pt: Solubility: Ethanol: 74 mg/mL (180.5 mM) DMSO: 74 mg/mL (180.5 mM) Water:

References

1. Chae YJ, et al. Endoxifen, the active metabolite of tamoxifen, inhibits cloned hERG potassium channels. *Eur J Pharmacol.* 2015 Apr 5;752:1-7.

Note: This product is for in vitro research use only