

Ixabepilone (BMS-247550)

Catalog No: #S6864

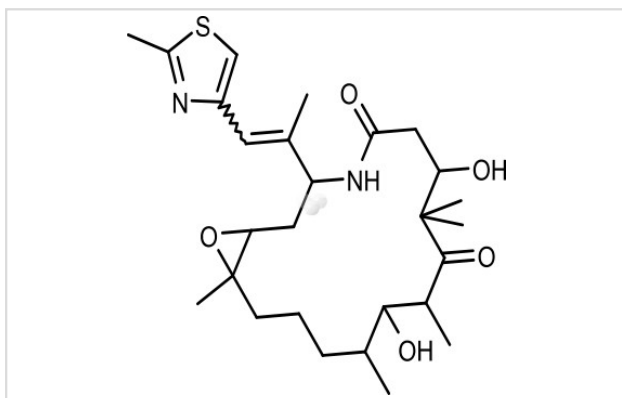
Orders: order@signalwayantibody.com

Support: tech@signalwayantibody.com

Description

Product Name	Ixabepilone (BMS-247550)
Brief Description	Inhibitors
Purification	/
Target Name	Microtubule Associated inhibitor
Calculated MW	506.7
Formulation	C27H42N2O5S
Storage	3 years -20°C powder; 2 years -80°C in solvent;

Images



Product Description

Research

Area: Others SMILES: C[C@H]1CCC[C@@]2([C@@H](O2)C[C@H](NC(=O)C[C@@H](C(C(=O)[C@@H]([C@H]1O)C)(C)C)O)/C(=C/C3=CSC(=N3)C

/C)C Pathways: Cytoskeletal Signaling Receptor: microtubule (tubulin stabilising) Boiling pt: Melting pt: Solubility: Ethanol: 100 mg/mL (197.35 mM)

DMSO: 100 mg/mL (197.35 mM)

Water:

Note: This product is for in vitro research use only