

Neu Polyclonal Antibody

Catalog No: #41218

Package Size: #41218-1 50ul #41218-2 100ul

Orders: order@signalwayantibody.comSupport: tech@signalwayantibody.com

Description

Product Name	Neu Polyclonal Antibody
Host Species	Rabbit
Clonality	Polyclonal
Purification	The antibody was affinity-purified from rabbit antiserum by affinity-chromatography using epitope-specific immunogen.
Applications	WB IHC ELISA
Species Reactivity	Hu Ms Rt
Specificity	Neu Polyclonal Antibody detects endogenous levels of Neu protein.
Immunogen Type	peptide
Immunogen Description	Synthesized peptide derived from human Neu around the non-phosphorylation site of Y1248.
Target Name	Neu
Other Names	ERBB2; HER2; MLN19; NEU; NGL; Receptor tyrosine-protein kinase erbB-2; Metastatic lymph node gene 19 protein; MLN 19; Proto-oncogene Neu; Proto-oncogene c-ErbB-2; Tyrosine kinase-type cell surface receptor HER2; p185erbB2; CD antigen CD340
Accession No.	Swiss-Prot: P04626NCBI Gene ID: 2064
Uniprot	P04626
GeneID	2064;
SDS-PAGE MW	145kd
Concentration	1mg/ml
Formulation	Liquid in PBS containing 50% glycerol, 0.5% BSA and 0.02% sodium azide.
Storage	Store at -20°C/1 year

Application Details

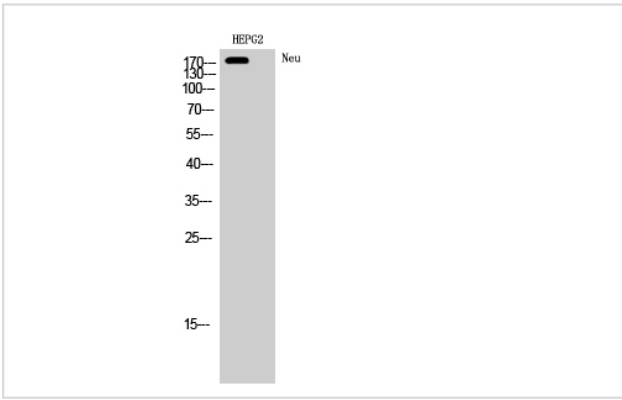
Western Blot: 1/500 - 1/2000.

Immunohistochemistry: 1/100 - 1/300.

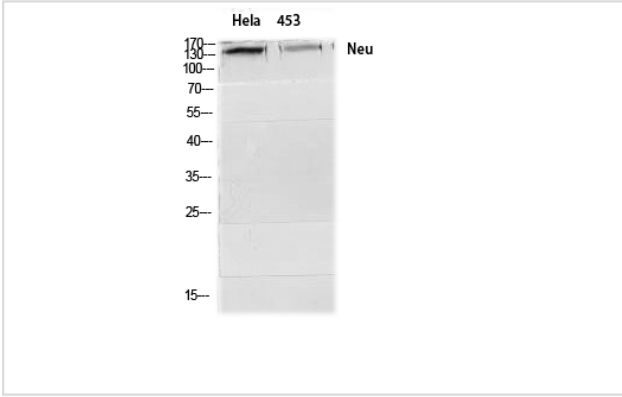
ELISA: 1/5000.

Not yet tested in other applications.

Images



Western Blot analysis of HEPG2 cells using Neu Polyclonal Antibody



Western Blot analysis of HeLa 453 cells using Neu Polyclonal Antibody

Note: This product is for in vitro research use only