

# Pramipexole 2HCl Monohydrate

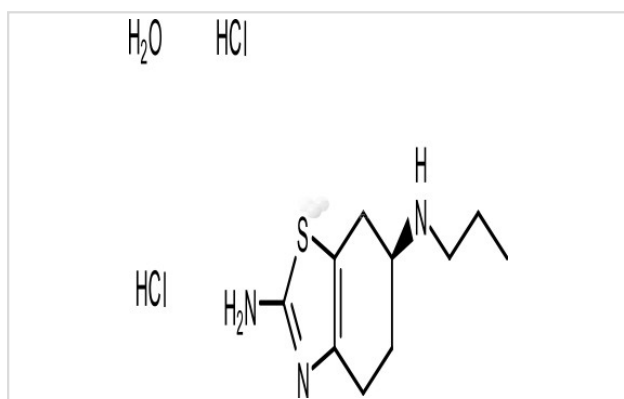
Catalog No: #S6951

Orders: [order@signalwayantibody.com](mailto:order@signalwayantibody.com)Support: [tech@signalwayantibody.com](mailto:tech@signalwayantibody.com)

## Description

Product Name	Pramipexole 2HCl Monohydrate
Brief Description	Inhibitors
Purification	98.00%
Target Name	Dopamine Receptor agonist
Calculated MW	302.26
Formulation	C <sub>10</sub> H <sub>17</sub> N <sub>3</sub> S <sub>2</sub> HCl <sub>2</sub> H <sub>2</sub> O
Storage	3 years -20°C powder; 2 years -80°C in solvent;

## Images



## Product Description

Research Area: Others SMILES: O.Cl.Cl.CCCN[C@H]1CCC2=C(C1)SC(N)=N2 [r,c:7,13] Pathways: Neuronal Signaling Receptor: D2S Receptor ; D2L Receptor ; D3 receptor ; D4 receptor Boiling pt: Melting pt: Solubility: Ethanol:

Note: This product is for in vitro research use only