

Beclin1 (Phospho-Ser30) Antibody

Catalog No: #11600

Package Size: #11600-1 50ul #11600-2 100ul

Orders: order@signalwayantibody.com

Support: tech@signalwayantibody.com

Description

Product Name	Beclin1 (Phospho-Ser30) Antibody
Host Species	Rabbit
Clonality	Polyclonal
Applications	WB IHC IP
Species Reactivity	Hu Ms Rt
Specificity	The antibody detects endogenous level of Beclin1 only when phosphorylated at serine 30.
Immunogen Type	Peptide
Immunogen Description	Peptide sequence around phosphorylation site of serine 30 (D-T-S(p)-F-K) derived from Human Beclin1.
Other Names	ATG6,VPS30,beclin1
Accession No.	Swiss-Prot#: Q14457 NCBI Gene ID: 8678 NCBI mRNA#: NM_003766.4 NCBI Protein#: NP_003757.1
Uniprot	Q14457
GeneID	8678;
Calculated MW	52KD
Concentration	1.0mg/mL
Formulation	Supplied at 1.0mg/mL in phosphate buffered saline (without Mg ²⁺ and Ca ²⁺), pH 7.4, 150mM NaCl, 0.02% sodium azide and 50% glycerol.
Storage	Store at -20°C

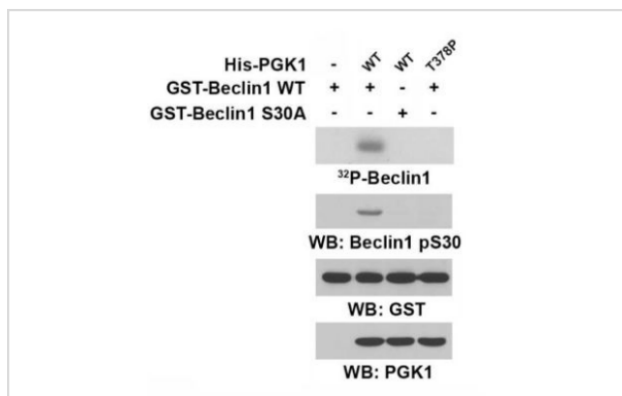
Application Details

WB dilution: 1:500~1:1000

IHC dilution: 1:50~1:100

IP dilution: 1:20~1:50

Images



The indicated His-PGK1 proteins immobilized on Ni-NTA agarose beads was incubated with Flag-ARD1 and Ac-CoA, followed by incubation with purified GST-Beclin1 or GST-Beclin1 S30A, in the presence of [γ -³²P] ATP. Autoradiography was performed.

Product Description

Antibodies were produced by immunizing rabbits with synthetic phosphopeptide and KLH conjugates. Antibodies were purified by affinity-chromatography using epitope-specific phosphopeptide. Non-phospho specific antibodies were removed by chromatography using non-phosphopeptide.

Background

Beclin-1 participates in the regulation of autophagy and has an important role in development, tumorigenesis, and neurodegeneration

References

Xu Qian¹, et al. Phosphoglycerate kinase 1 phosphorylates Beclin1 to induce autophagy. *Mol Cell*. 2017 March 02; 65(5): 917–931.e6. doi:10.1016/j.molcel.2017.01.027. Autho

Note: This product is for in vitro research use only