

NGEP Polyclonal Antibody

Catalog No: #41238

Package Size: #41238-1 50ul #41238-2 100ul

Orders: order@signalwayantibody.comSupport: tech@signalwayantibody.com

Description

Product Name	NGEP Polyclonal Antibody
Host Species	Rabbit
Clonality	Polyclonal
Purification	The antibody was affinity-purified from rabbit antiserum by affinity-chromatography using epitope-specific immunogen.
Applications	WB IHC IF
Species Reactivity	Hu
Specificity	NGEP Polyclonal Antibody detects endogenous levels of NGEP protein.
Immunogen Type	peptide
Immunogen Description	Synthesized peptide derived from the C-terminal region of human NGEP.
Target Name	NGEP
Other Names	ANO7; NGEP; PCANAP5; TMEM16G; Anoctamin-7; Dresden transmembrane protein of the prostate; D-TMPP; IPCA-5; New gene expressed in prostate; Prostate cancer-associated protein 5; Transmembrane protein 16G
Accession No.	Swiss-Prot: Q6IWH7NCBI Gene ID: 50636
Uniprot	Q6IWH7
GeneID	50636;
SDS-PAGE MW	105kd
Concentration	1mg/ml
Formulation	Liquid in PBS containing 50% glycerol, 0.5% BSA and 0.02% sodium azide.
Storage	Store at -20°C/1 year

Application Details

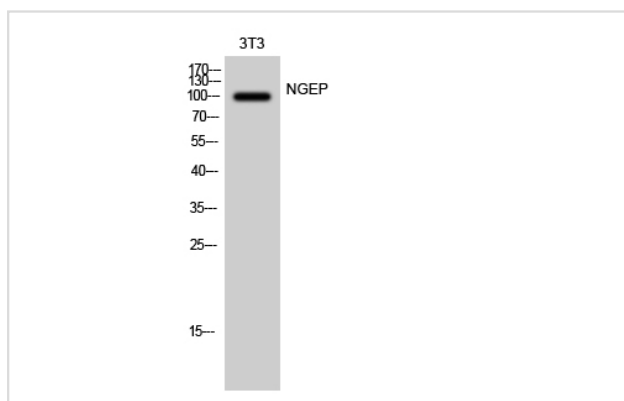
Western Blot: 1/500 - 1/2000.

Immunohistochemistry: 1/100 - 1/300.

Immunofluorescence: 1/200 - 1/1000.

Images

Western Blot analysis of 3T3 cells using NGEP Polyclonal Antibody



Note: This product is for in vitro research use only