

## NOS2 Polyclonal Antibody

Catalog No: #41249

Package Size: #41249-1 50ul #41249-2 100ul

Orders: order@signalwayantibody.com

Support: tech@signalwayantibody.com

## Description

Product Name	NOS2 Polyclonal Antibody
Host Species	Rabbit
Clonality	Polyclonal
Purification	The antibody was affinity-purified from rabbit antiserum by affinity-chromatography using epitope-specific immunogen.
Applications	WB ELISA
Species Reactivity	Hu Ms Rt
Specificity	NOS2 Polyclonal Antibody detects endogenous levels of NOS2 protein.
Immunogen Type	peptide
Immunogen Description	Synthesized peptide derived from human NOS2 around the non-phosphorylation site of Y151.
Target Name	NOS2
Other Names	NOS2; NOS2A; Nitric oxide synthase; inducible; Hepatocyte NOS; HEP-NOS; Inducible NO synthase; Inducible NOS; iNOS; NOS type II; Peptidyl-cysteine S-nitrosylase NOS2
Accession No.	Swiss-Prot: P35228NCBI Gene ID: 4843
Uniprot	P35228
GeneID	4843;
SDS-PAGE MW	131kd
Concentration	1mg/ml
Formulation	Liquid in PBS containing 50% glycerol, 0.5% BSA and 0.02% sodium azide.
Storage	Store at -20°C/1 year

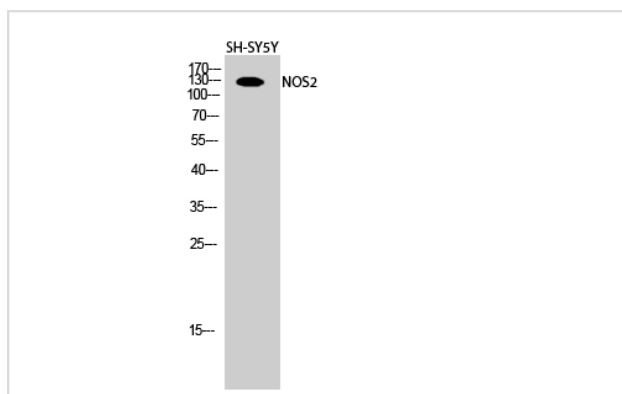
## Application Details

Western Blot: 1/500 - 1/2000.

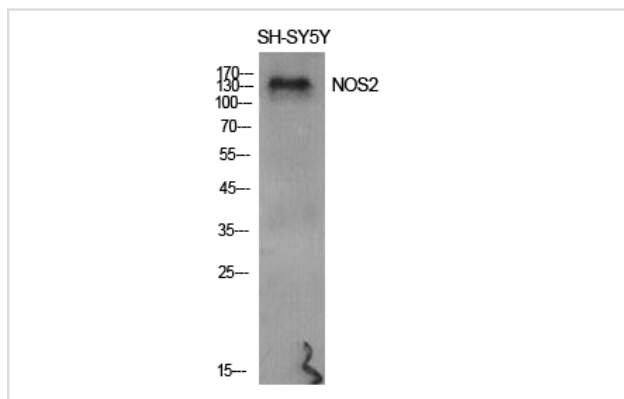
ELISA: 1/10000.

Not yet tested in other applications.

## Images



Western Blot analysis of SH-SY5Y cells using NOS2 Polyclonal Antibody



Western Blot analysis of SH-SY5Y cells using NOS2 Polyclonal Antibody

---

Note: This product is for in vitro research use only