

Nrf2 Polyclonal Antibody

Catalog No: #41255

Package Size: #41255-1 50ul #41255-2 100ul

Orders: order@signalwayantibody.comSupport: tech@signalwayantibody.com

Description

| | |
|-----------------------|--|
| Product Name | Nrf2 Polyclonal Antibody |
| Host Species | Rabbit |
| Clonality | Polyclonal |
| Purification | The antibody was affinity-purified from rabbit antiserum by affinity-chromatography using epitope-specific immunogen. |
| Applications | WB IHC IF ELISA |
| Species Reactivity | Hu Ms Rt |
| Specificity | Nrf2 Polyclonal Antibody detects endogenous levels of Nrf2 protein. |
| Immunogen Type | peptide |
| Immunogen Description | Synthesized peptide derived from the C-terminal region of human Nrf2. |
| Target Name | Nrf2 |
| Other Names | NFE2L2; NRF2; Nuclear factor erythroid 2-related factor 2; NF-E2-related factor 2; NFE2-related factor 2; HEBP1; Nuclear factor; erythroid derived 2, like 2 |
| Accession No. | Swiss-Prot: Q16236NCBI Gene ID: 4780 |
| Uniprot | Q16236 |
| GeneID | 4780; |
| SDS-PAGE MW | 68kd |
| Concentration | 1mg/ml |
| Formulation | Liquid in PBS containing 50% glycerol, 0.5% BSA and 0.02% sodium azide. |
| Storage | Store at -20°C/1 year |

Application Details

Western Blot: 1/500 - 1/2000.

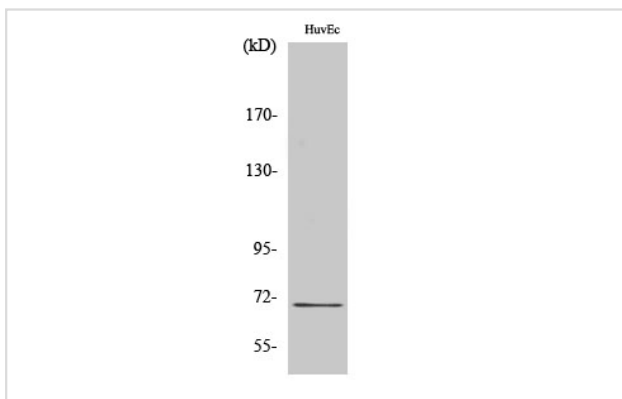
Immunohistochemistry: 1/100 - 1/300.

Immunofluorescence: 1/200 - 1/1000.

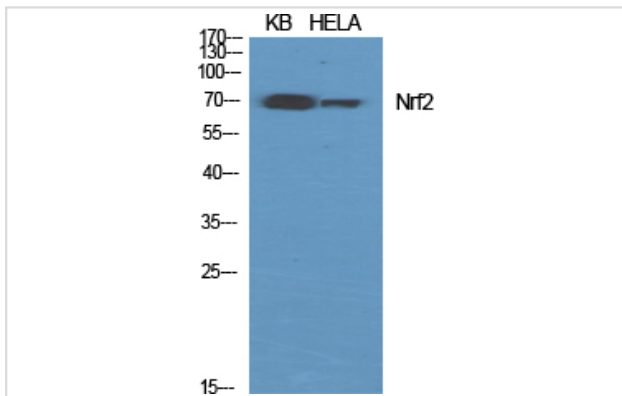
ELISA: 1/40000.

Not yet tested in other applications.

Images



Western Blot analysis of HuvEc cells using Nrf2 Polyclonal Antibody



Western Blot analysis of KB HELA cells using Nrf2 Polyclonal Antibody

Note: This product is for in vitro research use only