

Nucleophosmin Polyclonal Antibody

Catalog No: #41258

Package Size: #41258-1 50ul #41258-2 100ul

Orders: order@signalwayantibody.com

Support: tech@signalwayantibody.com

Description

Product Name	Nucleophosmin Polyclonal Antibody
Host Species	Rabbit
Clonality	Polyclonal
Purification	The antibody was affinity-purified from rabbit antiserum by affinity-chromatography using epitope-specific immunogen.
Applications	WB IHC ELISA
Species Reactivity	Hu Ms Rt Mk
Specificity	Nucleophosmin Polyclonal Antibody detects endogenous levels of Nucleophosmin protein.
Immunogen Type	peptide
Immunogen Description	Synthesized peptide derived from the N-terminal region of human Nucleophosmin.
Target Name	Nucleophosmin
Other Names	NPM1; NPM; Nucleophosmin; NPM; Nucleolar phosphoprotein B23; Nucleolar protein NO38; Numatrin
Accession No.	Swiss-Prot: P06748NCBI Gene ID: 4869
Uniprot	P06748
GeneID	4869;
SDS-PAGE MW	37kd
Concentration	1mg/ml
Formulation	Liquid in PBS containing 50% glycerol, 0.5% BSA and 0.02% sodium azide.
Storage	Store at -20°C/1 year

Application Details

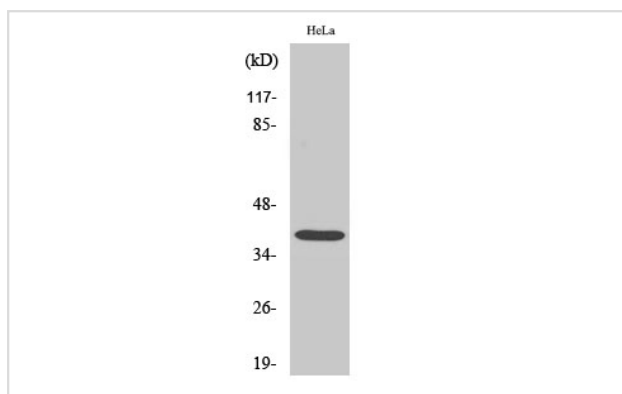
Western Blot: 1/500 - 1/2000.

Immunohistochemistry: 1/100 - 1/300.

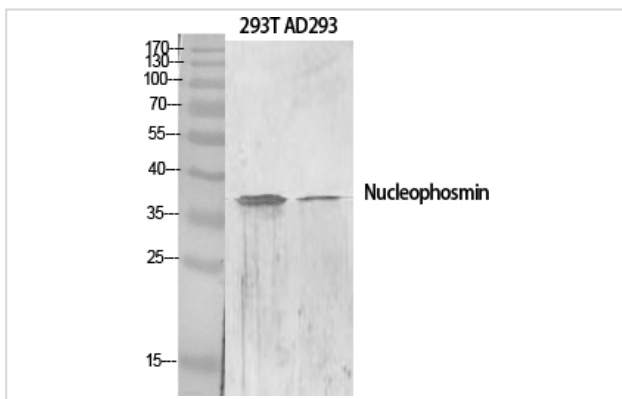
ELISA: 1/10000.

Not yet tested in other applications.

Images



Western Blot analysis of COS7 cells using Nucleophosmin Polyclonal Antibody



Western Blot analysis of 293 AD293 cells using Nucleophosmin Polyclonal Antibody

Note: This product is for in vitro research use only