

## OATP1 Polyclonal Antibody

Catalog No: #41260

Package Size: #41260-1 50ul #41260-2 100ul

Orders: [order@signalwayantibody.com](mailto:order@signalwayantibody.com)Support: [tech@signalwayantibody.com](mailto:tech@signalwayantibody.com)

## Description

Product Name	OATP1 Polyclonal Antibody
Host Species	Rabbit
Clonality	Polyclonal
Purification	The antibody was affinity-purified from rabbit antiserum by affinity-chromatography using epitope-specific immunogen.
Applications	WB IHC ELISA
Species Reactivity	Hu
Specificity	OATP1 Polyclonal Antibody detects endogenous levels of OATP1 protein.
Immunogen Type	peptide
Immunogen Description	Synthesized peptide derived from the Internal region of human OATP1.
Target Name	OATP1
Other Names	SLCO1A2; OATP; OATP1; OATP1A2; SLC21A3; Solute carrier organic anion transporter family member 1A2; OATP-A; Organic anion-transporting polypeptide 1; OATP-1; Sodium-independent organic anion transporter; Solute carrier family 21 member 3
Accession No.	Swiss-Prot: P46721NCBI Gene ID: 6579
Uniprot	P46721
GeneID	6579;
SDS-PAGE MW	80kd
Concentration	1mg/ml
Formulation	Liquid in PBS containing 50% glycerol, 0.5% BSA and 0.02% sodium azide.
Storage	Store at -20°C/1 year

## Application Details

Western Blot: 1/500 - 1/2000.

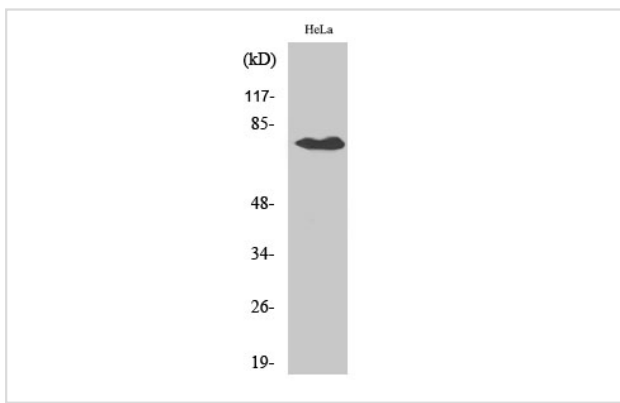
Immunohistochemistry: 1/100 - 1/300.

ELISA: 1/20000.

Not yet tested in other applications.

## Images

Western Blot analysis of HepG2 cells using OATP1 Polyclonal Antibody



Note: This product is for in vitro research use only