

Olfactory receptor 2AG1/2 Polyclonal Antibody

Catalog No: #41268

Package Size: #41268-1 50ul #41268-2 100ul

Orders: order@signalwayantibody.comSupport: tech@signalwayantibody.com

Description

Product Name	Olfactory receptor 2AG1/2 Polyclonal Antibody
Host Species	Rabbit
Clonality	Polyclonal
Purification	The antibody was affinity-purified from rabbit antiserum by affinity-chromatography using epitope-specific immunogen.
Applications	WB IF ELISA
Species Reactivity	Hu
Specificity	Olfactory receptor 2AG1/2 Polyclonal Antibody detects endogenous levels of Olfactory receptor 2AG1/2 protein.
Immunogen Type	peptide
Immunogen Description	Synthesized peptide derived from the Internal region of human Olfactory receptor 2AG1/2.
Target Name	Olfactory receptor 2AG1/2
Other Names	OR2AG2; OR2AG2P; Olfactory receptor 2AG2; OR2AG1; OR2AG3; Olfactory receptor 2AG1; HT3; Olfactory receptor 2AG3; Olfactory receptor OR11-79
Accession No.	Swiss-Prot: A6NM03/Q9H205NCBI Gene ID: 144125/338755
Uniprot	A6NM03
GeneID	338755;
SDS-PAGE MW	34kd
Concentration	1mg/ml
Formulation	Liquid in PBS containing 50% glycerol, 0.5% BSA and 0.02% sodium azide.
Storage	Store at -20°C/1 year

Application Details

Western Blot: 1/500 - 1/2000.

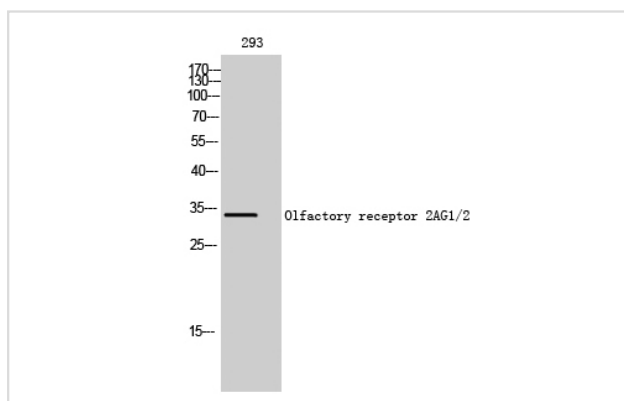
Immunofluorescence: 1/200 - 1/1000.

ELISA: 1/5000.

Not yet tested in other applications.

Images

Western Blot analysis of 293 cells using Olfactory receptor 2AG1/2 Polyclonal Antibody



Note: This product is for in vitro research use only