

Olfactory receptor 2T2/35 Polyclonal Antibody

Catalog No: #41270

Package Size: #41270-1 50ul #41270-2 100ul

Orders: order@signalwayantibody.comSupport: tech@signalwayantibody.com

Description

Product Name	Olfactory receptor 2T2/35 Polyclonal Antibody
Host Species	Rabbit
Clonality	Polyclonal
Purification	The antibody was affinity-purified from rabbit antiserum by affinity-chromatography using epitope-specific immunogen.
Applications	WB IF ELISA
Species Reactivity	Hu
Specificity	Olfactory receptor 2T2/35 Polyclonal Antibody detects endogenous levels of Olfactory receptor 2T2/35 protein.
Immunogen Type	peptide
Immunogen Description	Synthesized peptide derived from the Internal region of human Olfactory receptor 2T2/35.
Target Name	Olfactory receptor 2T2/35
Other Names	OR2T35; Olfactory receptor 2T35; Olfactory receptor OR1-66; OR2T2; OR2T2P; Olfactory receptor 2T2; Olfactory receptor OR1-43
Accession No.	Swiss-Prot: Q8NGX2/Q6IF00NCBI Gene ID: 403244/401992
Uniprot	Q8NGX2
GeneID	403244;
SDS-PAGE MW	34kd
Concentration	1mg/ml
Formulation	Liquid in PBS containing 50% glycerol, 0.5% BSA and 0.02% sodium azide.
Storage	Store at -20°C/1 year

Application Details

Western Blot: 1/500 - 1/2000.

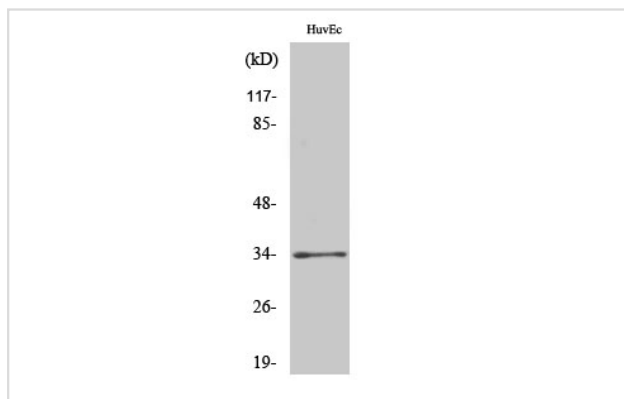
Immunofluorescence: 1/200 - 1/1000.

ELISA: 1/5000.

Not yet tested in other applications.

Images

Western Blot analysis of HuvEc cells using Olfactory receptor 2T2/35 Polyclonal Antibody



Note: This product is for in vitro research use only