

Olfactory receptor 4D1 Polyclonal Antibody

Catalog No: #41272

Package Size: #41272-1 50ul #41272-2 100ul

Orders: order@signalwayantibody.com

Support: tech@signalwayantibody.com

Description

Product Name	Olfactory receptor 4D1 Polyclonal Antibody
Host Species	Rabbit
Clonality	Polyclonal
Purification	The antibody was affinity-purified from rabbit antiserum by affinity-chromatography using epitope-specific immunogen.
Applications	WB IF ELISA
Species Reactivity	Hu
Specificity	Olfactory receptor 4D1 Polyclonal Antibody detects endogenous levels of Olfactory receptor 4D1 protein.
Immunogen Type	peptide
Immunogen Description	Synthesized peptide derived from the C-terminal region of human Olfactory receptor 4D1.
Target Name	Olfactory receptor 4D1
Other Names	OR4D1; OR4D3; Olfactory receptor 4D1; Olfactory receptor 4D3; Olfactory receptor TPCR16
Accession No.	Swiss-Prot: Q15615NCBI Gene ID: 26689
Uniprot	Q15615
GeneID	26689;
SDS-PAGE MW	34kd
Concentration	1mg/ml
Formulation	Liquid in PBS containing 50% glycerol, 0.5% BSA and 0.02% sodium azide.
Storage	Store at -20°C/1 year

Application Details

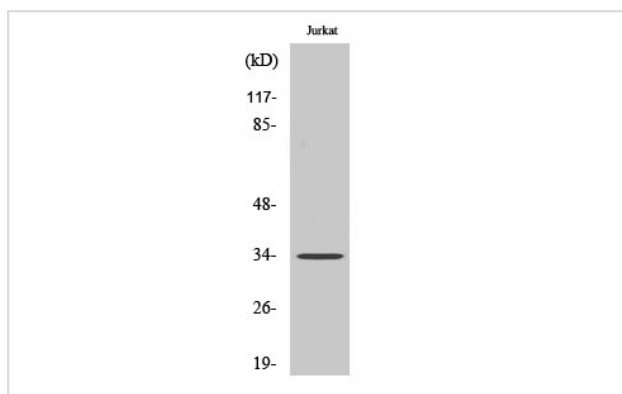
Western Blot: 1/500 - 1/2000.

Immunofluorescence: 1/200 - 1/1000.

ELISA: 1/40000.

Not yet tested in other applications.

Images



Western Blot analysis of Jurkat cells using Olfactory receptor 4D1 Polyclonal Antibody

Note: This product is for in vitro research use only