

Olfactory receptor 52E6 Polyclonal Antibody

Catalog No: #41278

Package Size: #41278-1 50ul #41278-2 100ul

Orders: order@signalwayantibody.comSupport: tech@signalwayantibody.com

Description

Product Name	Olfactory receptor 52E6 Polyclonal Antibody
Host Species	Rabbit
Clonality	Polyclonal
Purification	The antibody was affinity-purified from rabbit antiserum by affinity-chromatography using epitope-specific immunogen.
Applications	WB ELISA
Species Reactivity	Hu
Specificity	Olfactory receptor 52E6 Polyclonal Antibody detects endogenous levels of Olfactory receptor 52E6 protein.
Immunogen Type	peptide
Immunogen Description	Synthesized peptide derived from the C-terminal region of human Olfactory receptor 52E6.
Target Name	Olfactory receptor 52E6
Other Names	OR52E6; Olfactory receptor 52E6; Olfactory receptor OR11-58
Accession No.	Swiss-Prot: Q96RD3NCBI Gene ID: 390078
Uniprot	Q96RD3
GeneID	390078;
SDS-PAGE MW	35kd
Concentration	1mg/ml
Formulation	Liquid in PBS containing 50% glycerol, 0.5% BSA and 0.02% sodium azide.
Storage	Store at -20°C/1 year

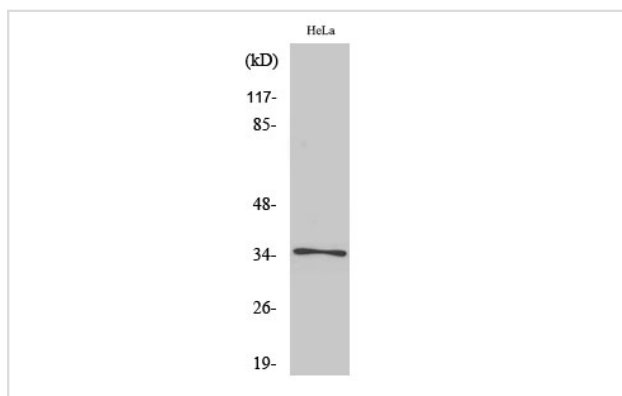
Application Details

Western Blot: 1/500 - 1/2000.

ELISA: 1/10000.

Not yet tested in other applications.

Images



Western Blot analysis of MCF7 cells using Olfactory receptor 52E6 Polyclonal Antibody

Note: This product is for in vitro research use only