

Olfactory receptor 7C1 Polyclonal Antibody

Catalog No: #41285

Package Size: #41285-1 50ul #41285-2 100ul

Orders: order@signalwayantibody.comSupport: tech@signalwayantibody.com

Description

| | |
|-----------------------|---|
| Product Name | Olfactory receptor 7C1 Polyclonal Antibody |
| Host Species | Rabbit |
| Clonality | Polyclonal |
| Purification | The antibody was affinity-purified from rabbit antiserum by affinity-chromatography using epitope-specific immunogen. |
| Applications | WB IF ELISA |
| Species Reactivity | Hu |
| Specificity | Olfactory receptor 7C1 Polyclonal Antibody detects endogenous levels of Olfactory receptor 7C1 protein. |
| Immunogen Type | peptide |
| Immunogen Description | Synthesized peptide derived from the Internal region of human Olfactory receptor 7C1. |
| Target Name | Olfactory receptor 7C1 |
| Other Names | OR7C1; OR7C4; Olfactory receptor 7C1; Olfactory receptor 7C4; Olfactory receptor OR19-16; Olfactory receptor TPCR86 |
| Accession No. | Swiss-Prot: O76099NCBI Gene ID: 26664 |
| Uniprot | O76099 |
| GeneID | 26664; |
| SDS-PAGE MW | 34kd |
| Concentration | 1mg/ml |
| Formulation | Liquid in PBS containing 50% glycerol, 0.5% BSA and 0.02% sodium azide. |
| Storage | Store at -20°C/1 year |

Application Details

Western Blot: 1/500 - 1/2000.

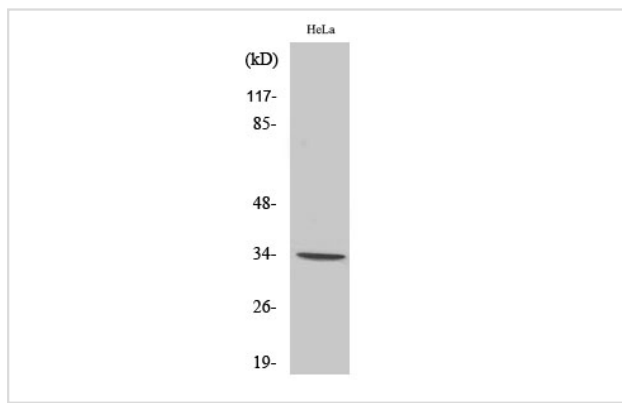
Immunofluorescence: 1/200 - 1/1000.

ELISA: 1/20000.

Not yet tested in other applications.

Images

Western Blot analysis of COLO205 cells using Olfactory receptor 7C1 Polyclonal Antibody



Note: This product is for in vitro research use only