

Op18 Polyclonal Antibody

Catalog No: #41287

Package Size: #41287-1 50ul #41287-2 100ul

Orders: order@signalwayantibody.comSupport: tech@signalwayantibody.com

Description

Product Name	Op18 Polyclonal Antibody
Host Species	Rabbit
Clonality	Polyclonal
Purification	The antibody was affinity-purified from rabbit antiserum by affinity-chromatography using epitope-specific immunogen.
Applications	WB IHC IF ELISA
Species Reactivity	Hu Ms Rt
Specificity	Op18 Polyclonal Antibody detects endogenous levels of Op18 protein.
Immunogen Type	peptide
Immunogen Description	Synthesized peptide derived from human Op18 around the non-phosphorylation site of S25.
Target Name	Op18
Other Names	STMN1; C1orf215; LAP18; OP18; Stathmin; Leukemia-associated phosphoprotein p18; Metablastin; Oncoprotein 18; Op18; Phosphoprotein p19; pp19; ProsoLin; Protein Pr22; pp17
Accession No.	Swiss-Prot: P16949NCBI Gene ID: 3925
Uniprot	P16949
GeneID	3925;
SDS-PAGE MW	19kd
Concentration	1mg/ml
Formulation	Liquid in PBS containing 50% glycerol, 0.5% BSA and 0.02% sodium azide.
Storage	Store at -20°C/1 year

Application Details

Western Blot: 1/500 - 1/2000.

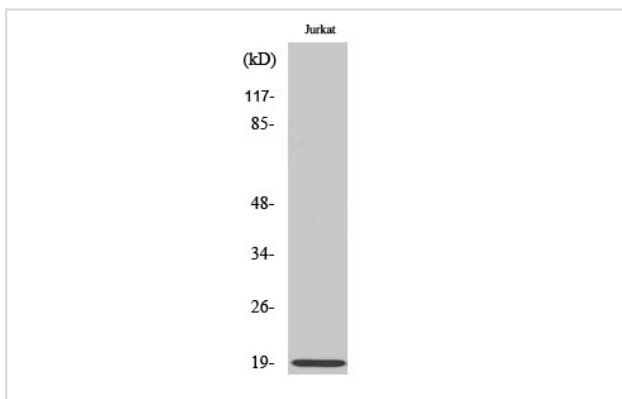
Immunohistochemistry: 1/100 - 1/300.

Immunofluorescence: 1/200 - 1/1000.

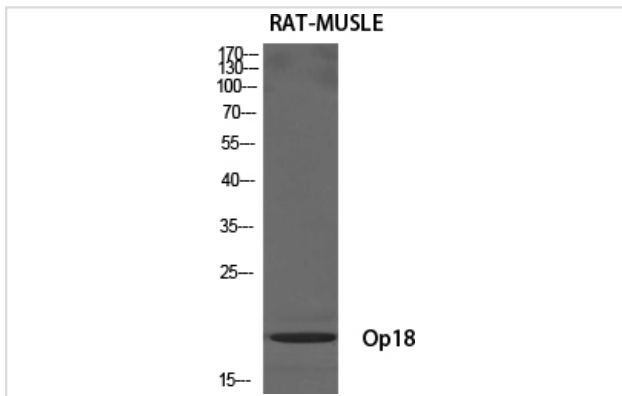
ELISA: 1/10000.

Not yet tested in other applications.

Images



Western Blot analysis of Jurkat cells using Op18 Polyclonal Antibody



Western Blot analysis of RAT-MUSCLE cells using Op18 Polyclonal Antibody

Note: This product is for in vitro research use only