

## OPG Polyclonal Antibody

Catalog No: #41289

Package Size: #41289-1 50ul #41289-2 100ul

Orders: [order@signalwayantibody.com](mailto:order@signalwayantibody.com)Support: [tech@signalwayantibody.com](mailto:tech@signalwayantibody.com)

## Description

Product Name	OPG Polyclonal Antibody
Host Species	Rabbit
Clonality	Polyclonal
Purification	The antibody was affinity-purified from rabbit antiserum by affinity-chromatography using epitope-specific immunogen.
Applications	WB IHC IF ELISA
Species Reactivity	Hu Ms
Specificity	OPG Polyclonal Antibody detects endogenous levels of OPG protein.
Immunogen Type	peptide
Immunogen Description	Synthesized peptide derived from the N-terminal region of human OPG.
Target Name	OPG
Other Names	TNFRSF11B; OCIF; OPG; Tumor necrosis factor receptor superfamily member 11B; Osteoclastogenesis inhibitory factor; Osteoprotegerin
Accession No.	Swiss-Prot: O00300NCBI Gene ID: 4982
Uniprot	O00300
GeneID	4982;
SDS-PAGE MW	55kd
Concentration	1mg/ml
Formulation	Liquid in PBS containing 50% glycerol, 0.5% BSA and 0.02% sodium azide.
Storage	Store at -20°C/1 year

## Application Details

Western Blot: 1/500 - 1/2000.

Immunohistochemistry: 1/100 - 1/300.

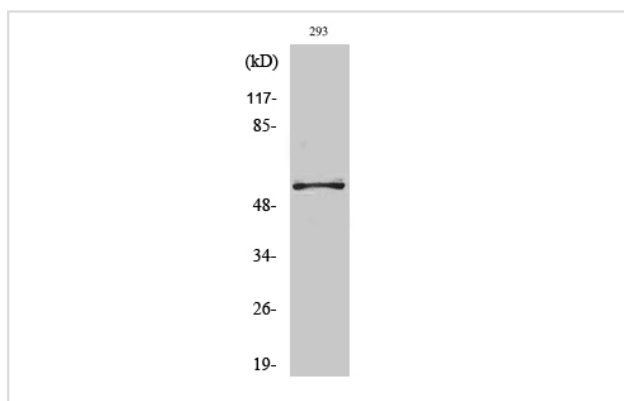
Immunofluorescence: 1/200 - 1/1000.

ELISA: 1/10000.

Not yet tested in other applications.

## Images

Western Blot analysis of 293 cells using OPG Polyclonal Antibody



Note: This product is for in vitro research use only