

OTUB2 Polyclonal Antibody

Catalog No: #41293

Package Size: #41293-1 50ul #41293-2 100ul

Orders: order@signalwayantibody.com

Support: tech@signalwayantibody.com

Description

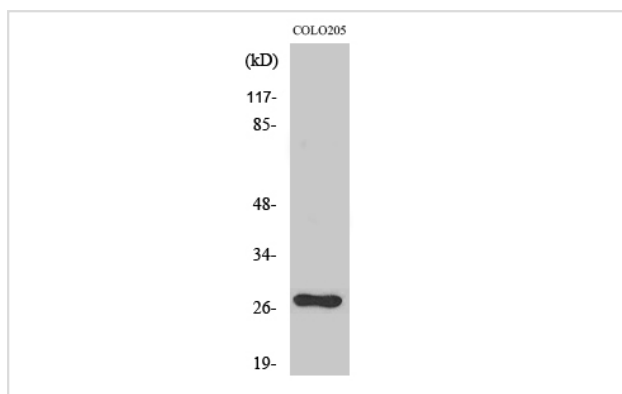
Product Name	OTUB2 Polyclonal Antibody
Host Species	Rabbit
Clonality	Polyclonal
Purification	The antibody was affinity-purified from rabbit antiserum by affinity-chromatography using epitope-specific immunogen.
Applications	WB IHC
Species Reactivity	Hu Ms Rt
Specificity	OTUB2 Polyclonal Antibody detects endogenous levels of OTUB2 protein.
Immunogen Type	peptide
Immunogen Description	Synthesized peptide derived from the Internal region of human OTUB2.
Target Name	OTUB2
Other Names	OTUB2; C14orf137; OTB2; OTU2; Ubiquitin thioesterase OTUB2; Deubiquitinating enzyme OTUB2; OTU domain-containing ubiquitin aldehyde-binding protein 2; Otubain-2; Ubiquitin-specific-processing protease OTUB2
Accession No.	Swiss-Prot: Q96DC9NCBI Gene ID: 78990
Uniprot	Q96DC9
GeneID	78990;
SDS-PAGE MW	27kd
Concentration	1mg/ml
Formulation	Liquid in PBS containing 50% glycerol, 0.5% BSA and 0.02% sodium azide.
Storage	Store at -20°C/1 year

Application Details

Western Blot: 1/500 - 1/2000.

Immunohistochemistry: 1/100 - 1/300.

Images



Western Blot analysis of HT29 cells using OTUB2 Polyclonal Antibody

Note: This product is for in vitro research use only