

p21 Polyclonal Antibody

Catalog No: #41297

Package Size: #41297-1 50ul #41297-2 100ul

Orders: order@signalwayantibody.com

Support: tech@signalwayantibody.com

Description

Product Name	p21 Polyclonal Antibody
Host Species	Rabbit
Clonality	Polyclonal
Purification	The antibody was affinity-purified from rabbit antiserum by affinity-chromatography using epitope-specific immunogen.
Applications	WB ELISA IF/ICC IHC-p
Species Reactivity	Hu Ms Rt
Specificity	p21 Polyclonal Antibody detects endogenous levels of p21 protein.
Immunogen Description	Synthesized peptide derived from human p21 around the non-phosphorylation site of T145.
Target Name	p21
Other Names	CDKN1A; CAP20; CDKN1; CIP1; MDA6; PIC1; SDI1; WAF1; Cyclin-dependent kinase inhibitor 1; CDK-interacting protein 1; Melanoma differentiation-associated protein 6; MDA-6; p21
Accession No.	Swiss-Prot: P38936NCBI Gene ID: 1026
Uniprot	P38936
GeneID	1026;
SDS-PAGE MW	26kd
Concentration	1mg/ml
Formulation	Liquid in PBS containing 50% glycerol, 0.5% BSA and 0.02% sodium azide.
Storage	Store at -20°C/1 year

Application Details

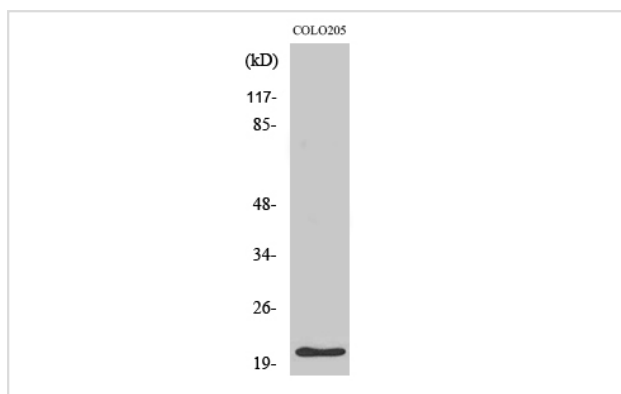
Western Blot: 1/500 - 1/2000.

IF: 1:50-200

ELISA: 1/20000.

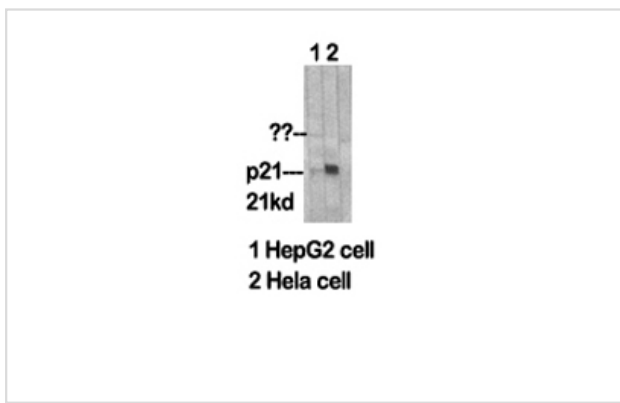
Not yet tested in other applications.

Images



Western Blot analysis of COLO205 cells using p21 Polyclonal Antibody

Western Blot analysis of HepG2 HELA cells using p21 Polyclonal Antibody



Note: This product is for in vitro research use only