

p23 Polyclonal Antibody

Catalog No: #41298

Package Size: #41298-1 50ul #41298-2 100ul

Orders: order@signalwayantibody.comSupport: tech@signalwayantibody.com

Description

Product Name	p23 Polyclonal Antibody
Host Species	Rabbit
Clonality	Polyclonal
Purification	The antibody was affinity-purified from rabbit antiserum by affinity-chromatography using epitope-specific immunogen.
Applications	WB IHC ELISA
Species Reactivity	Hu Ms Rt
Specificity	p23 Polyclonal Antibody detects endogenous levels of p23 protein.
Immunogen Type	peptide
Immunogen Description	Synthesized peptide derived from human p23 around the non-phosphorylation site of S113.
Target Name	p23
Other Names	PTGES3; P23; TEBP; Prostaglandin E synthase 3; Cytosolic prostaglandin E2 synthase; cPGES; Hsp90 co-chaperone; Progesterone receptor complex p23; Telomerase-binding protein p23
Accession No.	Swiss-Prot: Q15185NCBI Gene ID: 10728
Uniprot	Q15185
GeneID	10728;
SDS-PAGE MW	24kd
Concentration	1mg/ml
Formulation	Liquid in PBS containing 50% glycerol, 0.5% BSA and 0.02% sodium azide.
Storage	Store at -20°C/1 year

Application Details

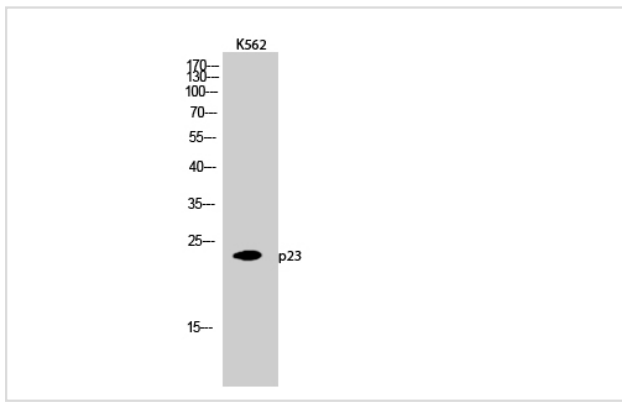
Western Blot: 1/500 - 1/2000.

Immunohistochemistry: 1/100 - 1/300.

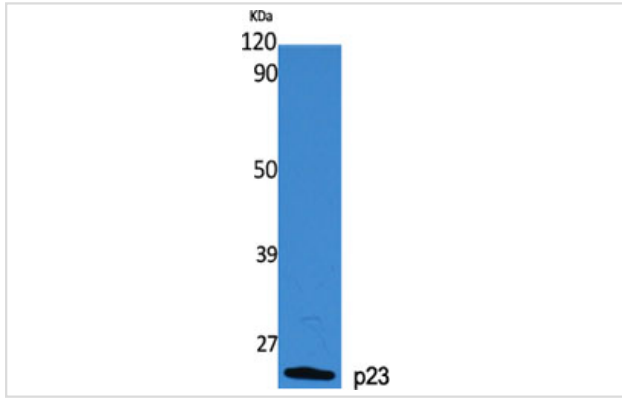
ELISA: 1/10000.

Not yet tested in other applications.

Images



Western Blot analysis of K562 cells using p23 Polyclonal Antibody



Western Blot analysis of various cells using p23 Polyclonal Antibody

Note: This product is for in vitro research use only