

p27 Polyclonal Antibody

Catalog No: #41299

Package Size: #41299-1 50ul #41299-2 100ul

Orders: order@signalwayantibody.com

Support: tech@signalwayantibody.com

Description

Product Name	p27 Polyclonal Antibody
Host Species	Rabbit
Clonality	Polyclonal
Purification	The antibody was affinity-purified from rabbit antiserum by affinity-chromatography using epitope-specific immunogen.
Applications	WB IHC ELISA
Species Reactivity	Hu Ms Rt
Specificity	p27 Polyclonal Antibody detects endogenous levels of p27 protein.
Immunogen Type	peptide
Immunogen Description	Synthesized peptide derived from human p27 around the non-phosphorylation site of T187.
Target Name	p27
Other Names	CDKN1B; KIP1; Cyclin-dependent kinase inhibitor 1B; Cyclin-dependent kinase inhibitor p27; p27Kip1
Accession No.	Swiss-Prot: P46527NCBI Gene ID: 1027
Uniprot	P46527
GeneID	1027;
SDS-PAGE MW	26kd
Concentration	1mg/ml
Formulation	Liquid in PBS containing 50% glycerol, 0.5% BSA and 0.02% sodium azide.
Storage	Store at -20°C/1 year

Application Details

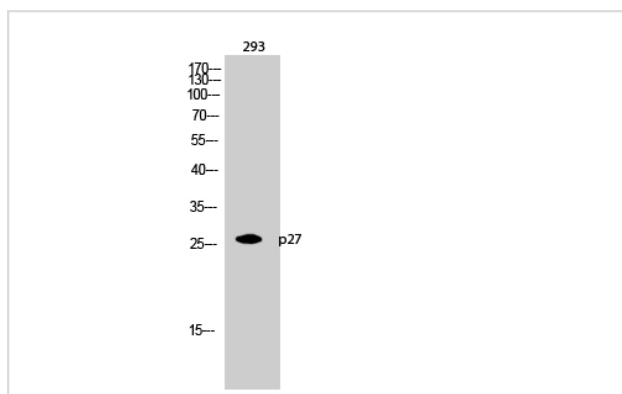
Western Blot: 1/500 - 1/2000.

Immunohistochemistry: 1/100 - 1/300.

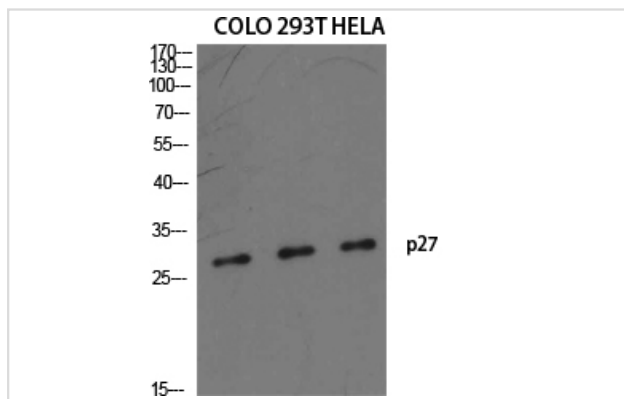
ELISA: 1/20000.

Not yet tested in other applications.

Images



Western Blot analysis of 293 cells using p27 Polyclonal Antibody



Western Blot analysis of COLO 293T HELA cells using p27 Polyclonal Antibody

Note: This product is for in vitro research use only