

p300 Polyclonal Antibody

Catalog No: #41303

Package Size: #41303-1 50ul #41303-2 100ul

Orders: order@signalwayantibody.com

Support: tech@signalwayantibody.com

Description

Product Name	p300 Polyclonal Antibody
Host Species	Rabbit
Clonality	Polyclonal
Purification	The antibody was affinity-purified from rabbit antiserum by affinity-chromatography using epitope-specific immunogen.
Applications	WB IHC ELISA
Species Reactivity	Hu
Specificity	p300 Polyclonal Antibody detects endogenous levels of p300 protein.
Immunogen Type	peptide
Immunogen Description	Synthesized peptide derived from the N-terminal region of human p300.
Target Name	p300
Other Names	EP300; P300; Histone acetyltransferase p300; p300 HAT; E1A-associated protein p300
Accession No.	Swiss-Prot: Q09472NCBI Gene ID: 2033
Uniprot	Q09472
GeneID	2033;
SDS-PAGE MW	264kd
Concentration	1mg/ml
Formulation	Liquid in PBS containing 50% glycerol, 0.5% BSA and 0.02% sodium azide.
Storage	Store at -20°C/1 year

Application Details

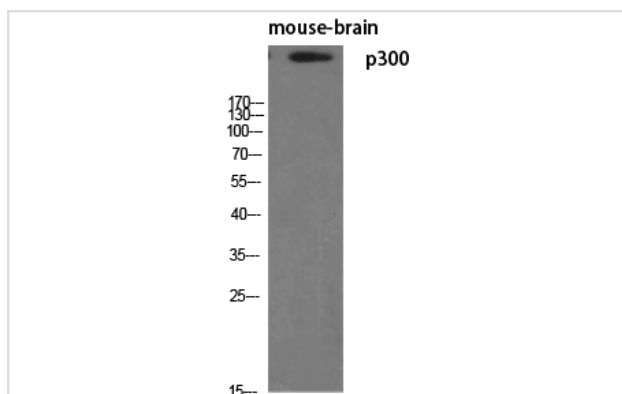
Western Blot: 1/500 - 1/2000.

Immunohistochemistry: 1/100 - 1/300.

ELISA: 1/10000.

Not yet tested in other applications.

Images



Western Blot analysis of MOUSE-BRAIN cells using p300 Polyclonal Antibody

Note: This product is for in vitro research use only