

## p38 Polyclonal Antibody

Catalog No: #41306

Package Size: #41306-1 50ul #41306-2 100ul

Orders: [order@signalwayantibody.com](mailto:order@signalwayantibody.com)Support: [tech@signalwayantibody.com](mailto:tech@signalwayantibody.com)

## Description

Product Name	p38 Polyclonal Antibody
Host Species	Rabbit
Clonality	Polyclonal
Purification	The antibody was affinity-purified from rabbit antiserum by affinity-chromatography using epitope-specific immunogen.
Applications	WB IHC IF ELISA
Species Reactivity	Hu Ms Rt
Specificity	p38 Polyclonal Antibody detects endogenous levels of p38 protein.
Immunogen Type	peptide
Immunogen Description	Synthesized peptide derived from human p38 around the non-phosphorylation site of Y323.
Target Name	p38
Other Names	MAPK14; CSBP; CSBP1; CSBP2; CSPB1; MXI2; SAPK2A; Mitogen-activated protein kinase 14; MAP kinase 14; MAPK 14; Cytokine suppressive anti-inflammatory drug-binding protein; CSAID-binding protein; CSBP; MAP kinase MXI2; MAX-interacting protein
Accession No.	Swiss-Prot: Q16539NCBI Gene ID: 1432
Uniprot	Q16539
GeneID	1432;
SDS-PAGE MW	45kd
Concentration	1mg/ml
Formulation	Liquid in PBS containing 50% glycerol, 0.5% BSA and 0.02% sodium azide.
Storage	Store at -20°C/1 year

## Application Details

Western Blot: 1/500 - 1/2000.

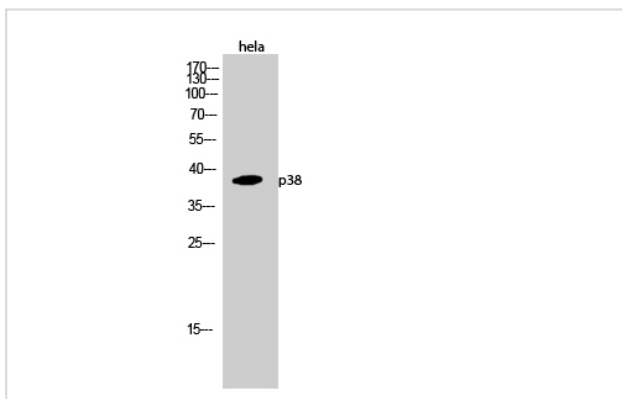
Immunohistochemistry: 1/100 - 1/300.

Immunofluorescence: 1/200 - 1/1000.

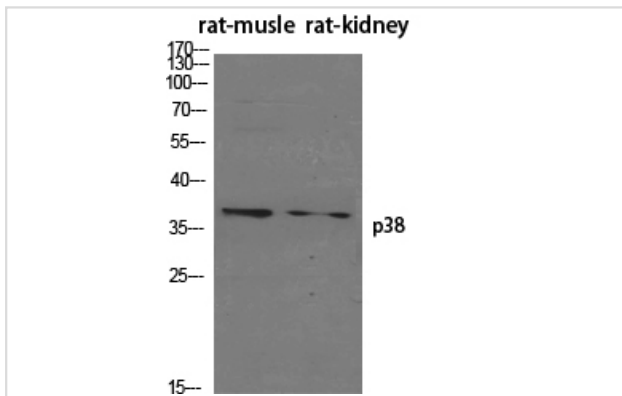
ELISA: 1/5000.

Not yet tested in other applications.

## Images



Western Blot analysis of hela cells using p38 Polyclonal Antibody



Western Blot analysis of RAT-MUSCLE RAT-KIDNEY cells using p38 Polyclonal Antibody

---

Note: This product is for in vitro research use only