

## p57 Polyclonal Antibody

Catalog No: #41315

Package Size: #41315-1 50ul #41315-2 100ul

Orders: order@signalwayantibody.com

Support: tech@signalwayantibody.com

## Description

Product Name	p57 Polyclonal Antibody
Host Species	Rabbit
Clonality	Polyclonal
Purification	The antibody was affinity-purified from rabbit antiserum by affinity-chromatography using epitope-specific immunogen.
Applications	WB IF ELISA
Species Reactivity	Hu Ms
Specificity	p57 Polyclonal Antibody detects endogenous levels of p57 protein.
Immunogen Type	peptide
Immunogen Description	Synthesized peptide derived from human p57 around the non-phosphorylation site of T310.
Target Name	p57
Other Names	CDKN1C; KIP2; Cyclin-dependent kinase inhibitor 1C; Cyclin-dependent kinase inhibitor p57; p57Kip2
Accession No.	Swiss-Prot: P49918NCBI Gene ID: 1028
Uniprot	P49918
GeneID	1028;
SDS-PAGE MW	32kd
Concentration	1mg/ml
Formulation	Liquid in PBS containing 50% glycerol, 0.5% BSA and 0.02% sodium azide.
Storage	Store at -20°C/1 year

## Application Details

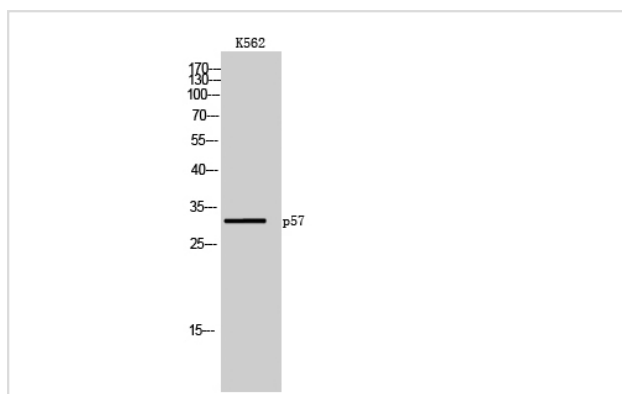
Western Blot: 1/500 - 1/2000.

Immunofluorescence: 1/200 - 1/1000.

ELISA: 1/5000.

Not yet tested in other applications.

## Images



Western Blot analysis of K562 cells using p57 Polyclonal Antibody

---

Note: This product is for in vitro research use only