

PAI-1 Polyclonal Antibody

Catalog No: #41321

Package Size: #41321-1 50ul #41321-2 100ul

Orders: order@signalwayantibody.comSupport: tech@signalwayantibody.com

Description

Product Name	PAI-1 Polyclonal Antibody
Host Species	Rabbit
Clonality	Polyclonal
Purification	The antibody was affinity-purified from rabbit antiserum by affinity-chromatography using epitope-specific immunogen.
Applications	WB IHC ELISA
Species Reactivity	Hu Ms Rt
Specificity	PAI-1 Polyclonal Antibody detects endogenous levels of PAI-1 protein.
Immunogen Type	peptide
Immunogen Description	Synthesized peptide derived from the Internal region of human PAI-1.
Target Name	PAI-1
Other Names	SERPINE1; PAI1; PLANH1; Plasminogen activator inhibitor 1; PAI; PAI-1; Endothelial plasminogen activator inhibitor; Serpin E1
Accession No.	Swiss-Prot: P05121NCBI Gene ID: 5054
Uniprot	P05121
GeneID	5054;
SDS-PAGE MW	37kd
Concentration	1mg/ml
Formulation	Liquid in PBS containing 50% glycerol, 0.5% BSA and 0.02% sodium azide.
Storage	Store at -20°C/1 year

Application Details

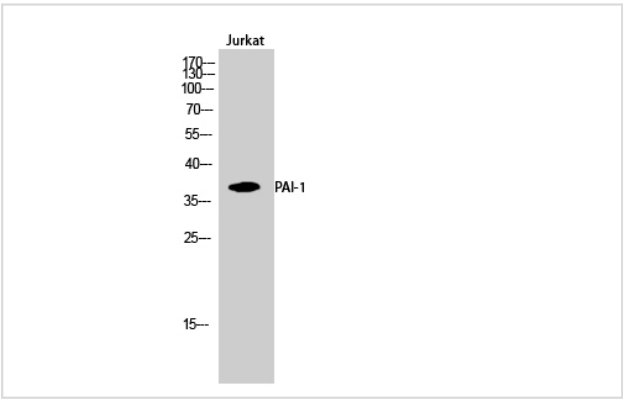
Western Blot: 1/500 - 1/2000.

Immunohistochemistry: 1/100 - 1/300.

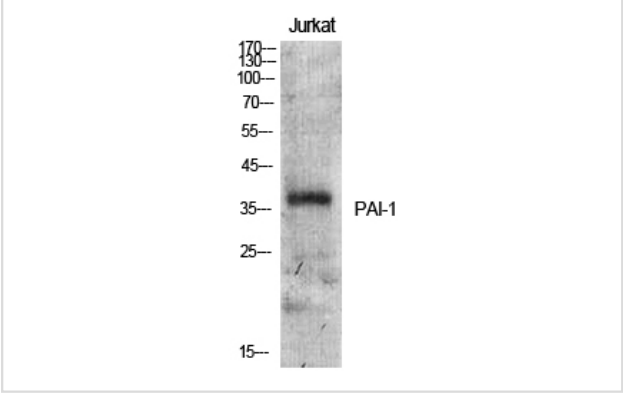
ELISA: 1/20000.

Not yet tested in other applications.

Images



Western Blot analysis of Jurkat cells using PAI-1 Polyclonal Antibody



Western Blot analysis of Jurkat cells using PAI-1 Polyclonal Antibody

Note: This product is for in vitro research use only