

## PFK-B Polyclonal Antibody

Catalog No: #41333

Package Size: #41333-1 50ul #41333-2 100ul

Orders: order@signalwayantibody.com

Support: tech@signalwayantibody.com

## Description

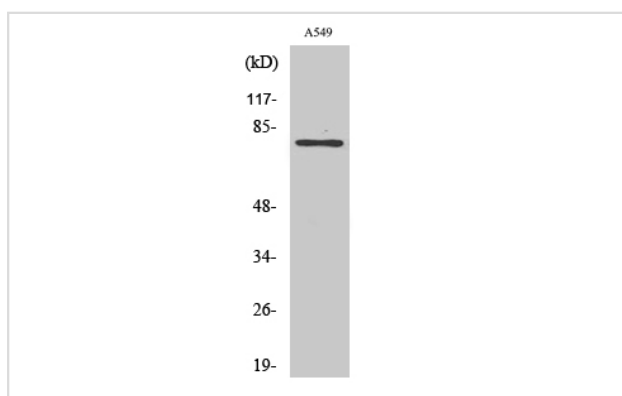
Product Name	PFK-B Polyclonal Antibody
Host Species	Rabbit
Clonality	Polyclonal
Purification	The antibody was affinity-purified from rabbit antiserum by affinity-chromatography using epitope-specific immunogen.
Applications	WB IHC
Species Reactivity	Hu Ms Rt
Specificity	PFK-B Polyclonal Antibody detects endogenous levels of PFK-B protein.
Immunogen Type	peptide
Immunogen Description	Synthesized peptide derived from the C-terminal region of human PFK-B.
Target Name	PFK-B
Other Names	PFKL; 6-phosphofructokinase; liver type; Phosphofructo-1-kinase isozyme B; PFK-B; Phosphofructokinase 1; Phosphohexokinase
Accession No.	Swiss-Prot: P17858NCBI Gene ID: 5211
Uniprot	P17858
GeneID	5211;
SDS-PAGE MW	85kd
Concentration	1mg/ml
Formulation	Liquid in PBS containing 50% glycerol, 0.5% BSA and 0.02% sodium azide.
Storage	Store at -20°C/1 year

## Application Details

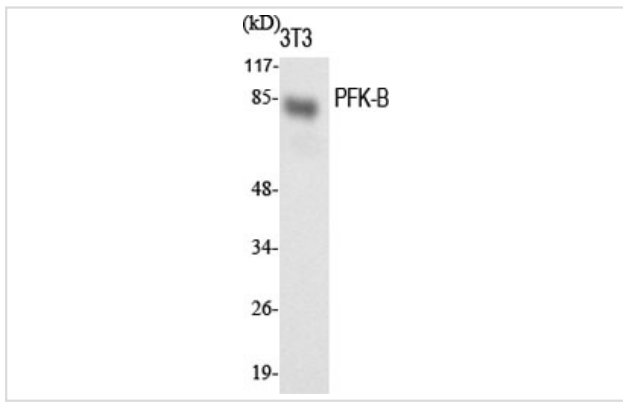
Western Blot: 1/500 - 1/2000.

Immunohistochemistry: 1/100 - 1/300.

## Images



Western Blot analysis of NIH-3T3 cells using PFK-B Polyclonal Antibody



Western Blot analysis of NIH-3T3 cells using PFK-B Polyclonal Antibody

---

Note: This product is for in vitro research use only