

PGRMC2 Polyclonal Antibody

Catalog No: #41335

Package Size: #41335-1 50ul #41335-2 100ul

Orders: order@signalwayantibody.com

Support: tech@signalwayantibody.com

Description

Product Name	PGRMC2 Polyclonal Antibody
Host Species	Rabbit
Clonality	Polyclonal
Purification	The antibody was affinity-purified from rabbit antiserum by affinity-chromatography using epitope-specific immunogen.
Applications	WB ELISA
Species Reactivity	Hu Ms Rt
Specificity	PGRMC2 Polyclonal Antibody detects endogenous levels of PGRMC2 protein.
Immunogen Type	peptide
Immunogen Description	Synthesized peptide derived from the C-terminal region of human PGRMC2.
Target Name	PGRMC2
Other Names	PGRMC2; DG6; PMBP; Membrane-associated progesterone receptor component 2; Progesterone membrane-binding protein; Steroid receptor protein DG6
Accession No.	Swiss-Prot: O15173NCBI Gene ID: 10424
Uniprot	O15173
GeneID	10424;
SDS-PAGE MW	25kd
Concentration	1mg/ml
Formulation	Liquid in PBS containing 50% glycerol, 0.5% BSA and 0.02% sodium azide.
Storage	Store at -20°C/1 year

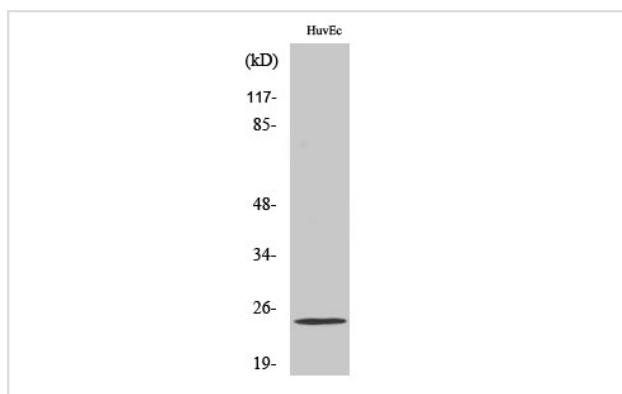
Application Details

Western Blot: 1/500 - 1/2000.

ELISA: 1/5000.

Not yet tested in other applications.

Images



Western Blot analysis of HeLa cells using PGRMC2 Polyclonal Antibody

Note: This product is for in vitro research use only