

PI 3-kinase p110 $\alpha$  Polyclonal Antibody

Catalog No: #41337

Package Size: #41337-1 50ul #41337-2 100ul

Orders: [order@signalwayantibody.com](mailto:order@signalwayantibody.com)Support: [tech@signalwayantibody.com](mailto:tech@signalwayantibody.com)

## Description

Product Name	PI 3-kinase p110 $\alpha$ Polyclonal Antibody
Host Species	Rabbit
Clonality	Polyclonal
Purification	The antibody was affinity-purified from rabbit antiserum by affinity-chromatography using epitope-specific immunogen.
Applications	WB IHC ELISA
Species Reactivity	Hu Ms
Specificity	PI 3-kinase p110 $\alpha$ Polyclonal Antibody detects endogenous levels of PI 3-kinase p110 $\alpha$ protein.
Immunogen Type	peptide
Immunogen Description	Synthesized peptide derived from the Internal region of human PI 3-kinase p110 $\alpha$ .
Target Name	PI 3-kinase p110 $\alpha$
Other Names	PIK3CA; Phosphatidylinositol 4; 5-bisphosphate 3-kinase catalytic subunit alpha isoform; PI3-kinase subunit alpha; PI3K-alpha; PI3Kalpha; PtdIns-3-kinase subunit alpha; Phosphatidylinositol 4,5-bisphosphate 3-kinase 110 kDa catalytic subunit
Accession No.	Swiss-Prot: P42336NCBI Gene ID: 5290
Uniprot	P42336
GeneID	5290;
SDS-PAGE MW	110kd
Concentration	1mg/ml
Formulation	Liquid in PBS containing 50% glycerol, 0.5% BSA and 0.02% sodium azide.
Storage	Store at -20°C/1 year

## Application Details

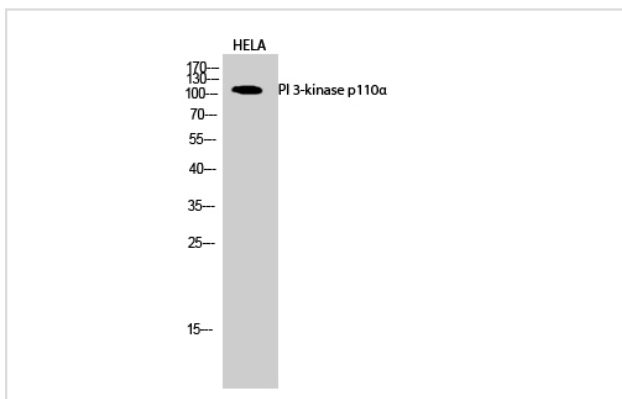
Western Blot: 1/500 - 1/2000.

Immunohistochemistry: 1/100 - 1/300.

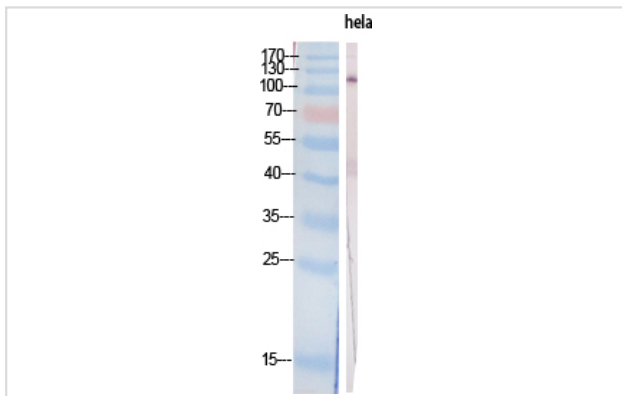
ELISA: 1/40000.

Not yet tested in other applications.

## Images



Western Blot analysis of HELA cells using PI 3-kinase p110 $\alpha$  Polyclonal Antibody



Western Blot analysis of HELA cells using PI 3-kinase p110 $\alpha$  Polyclonal Antibody

---

Note: This product is for in vitro research use only