

PKA α / β / γ cat Polyclonal Antibody

Catalog No: #41346

Package Size: #41346-1 50ul #41346-2 100ul

Orders: order@signalwayantibody.comSupport: tech@signalwayantibody.com

Description

Product Name	PKA α / β / γ cat Polyclonal Antibody
Host Species	Rabbit
Clonality	Polyclonal
Purification	The antibody was affinity-purified from rabbit antiserum by affinity-chromatography using epitope-specific immunogen.
Applications	WB IHC IF ELISA
Species Reactivity	Hu Ms Rt
Specificity	PKA α / β / γ cat Polyclonal Antibody detects endogenous levels of PKA α / β / γ cat protein.
Immunogen Type	peptide
Immunogen Description	Synthesized peptide derived from human PKA α / β / γ cat around the non-phosphorylation site of T198.
Target Name	PKA α / β / γ cat
Other Names	PRKACA; PKACA; cAMP-dependent protein kinase catalytic subunit alpha; PKA C-alpha; PRKACB; cAMP-dependent protein kinase catalytic subunit beta; PKA C-beta; PRKACG; cAMP-dependent protein kinase catalytic subunit gamma; PKA C-gamma
Accession No.	Swiss-Prot: P17612/P22694/P22612NCBI Gene ID: 5566/5567
Uniprot	P17612
GeneID	5566;
SDS-PAGE MW	40kd
Concentration	1mg/ml
Formulation	Liquid in PBS containing 50% glycerol, 0.5% BSA and 0.02% sodium azide.
Storage	Store at -20°C/1 year

Application Details

Western Blot: 1/500 - 1/2000.

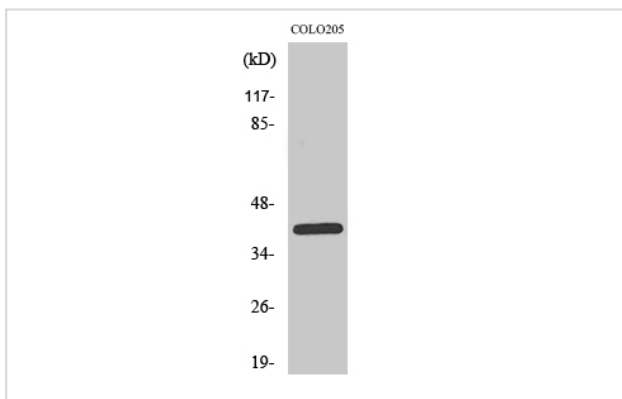
Immunohistochemistry: 1/100 - 1/300.

Immunofluorescence: 1/200 - 1/1000.

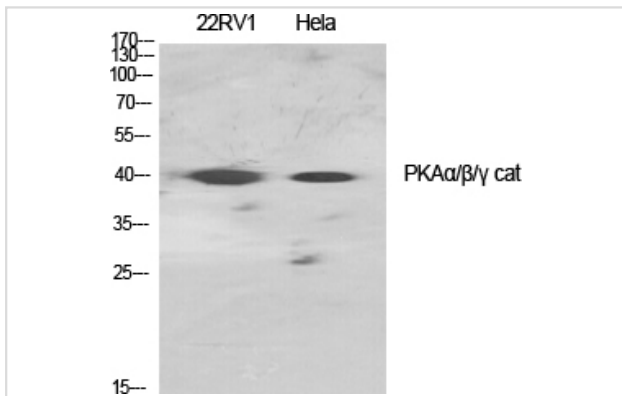
ELISA: 1/20000.

Not yet tested in other applications.

Images



Western Blot analysis of COLO205 cells using PKA α / β / γ cat Polyclonal Antibody



Western Blot analysis of 22RV1 HELA cells using PKA α / β / γ cat Polyclonal Antibody

Note: This product is for in vitro research use only