

PKC Polyclonal Antibody

Catalog No: #41347

Package Size: #41347-1 50ul #41347-2 100ul

Orders: order@signalwayantibody.comSupport: tech@signalwayantibody.com

Description

Product Name	PKC Polyclonal Antibody
Host Species	Rabbit
Clonality	Polyclonal
Purification	The antibody was affinity-purified from rabbit antiserum by affinity-chromatography using epitope-specific immunogen.
Applications	WB IHC IF ELISA
Species Reactivity	Hu Ms Rt
Specificity	PKC Polyclonal Antibody detects endogenous levels of PKC protein.
Immunogen Description	Synthesized peptide derived from human PKC around the non-phosphorylation site of T497.
Target Name	PKC
Other Names	PRKCA; PKCA; PRKACA; Protein kinase C alpha type; PKC-A; PKC-alpha; PRKCB; PKCB; PRKCB1; Protein kinase C beta type; PKC-B; PKC-beta; PRKCD; Protein kinase C delta type; Tyrosine-protein kinase PRKCD; nPKC-delta; PRKCE; PKCE; Protein kinase
Accession No.	Swiss-Prot: P17252/P05771/Q05655/Q02156/P05129/P24723/Q04759/Q05513NCBI Gene ID: 5578/5579/5580/5581/5582/5583/5588/5590
Uniprot	P17252
GeneID	5578;
SDS-PAGE MW	83kd
Concentration	1mg/ml
Formulation	Liquid in PBS containing 50% glycerol, 0.5% BSA and 0.02% sodium azide.
Storage	Store at -20°C/1 year

Application Details

Western Blot: 1/500 - 1/2000.

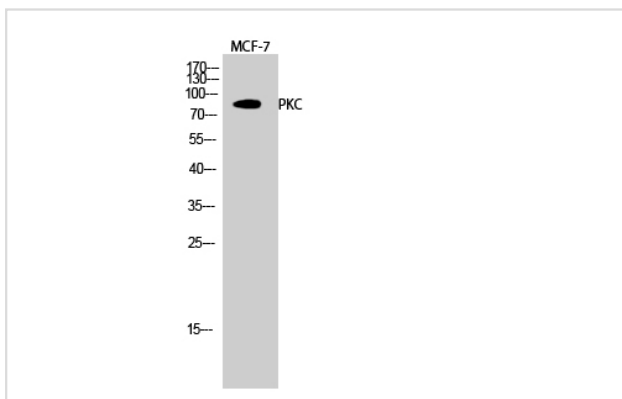
Immunohistochemistry: 1/100 - 1/300.

Immunofluorescence: 1/200 - 1/1000.

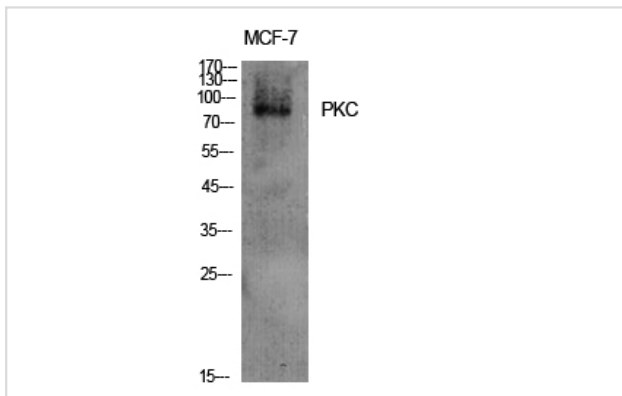
ELISA: 1/5000.

Not yet tested in other applications.

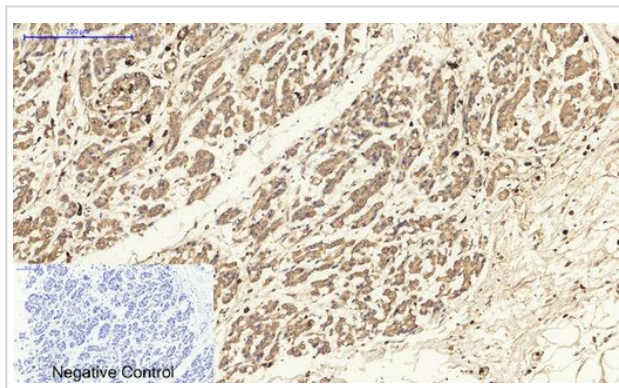
Images



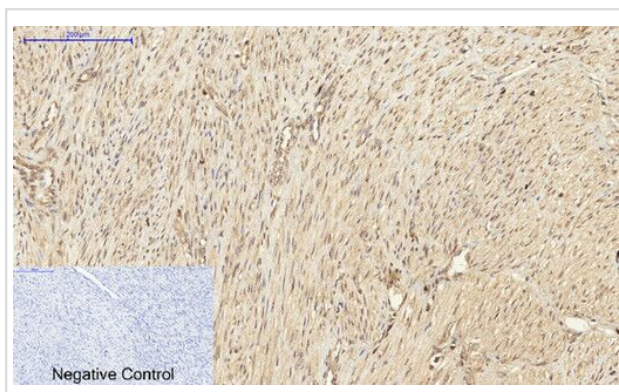
Western Blot analysis of MCF-7 cells using PKC Polyclonal Antibody



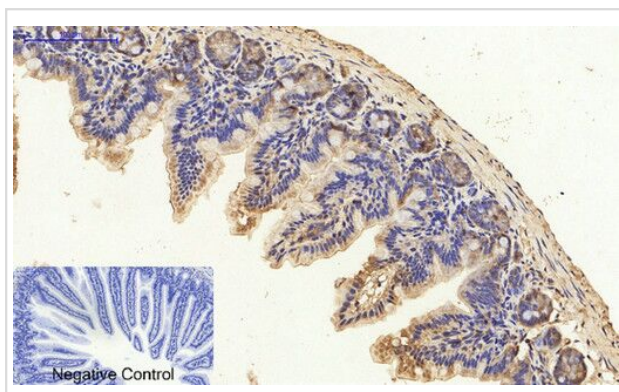
Western Blot analysis of MCF-7 cells using PKC Polyclonal Antibody



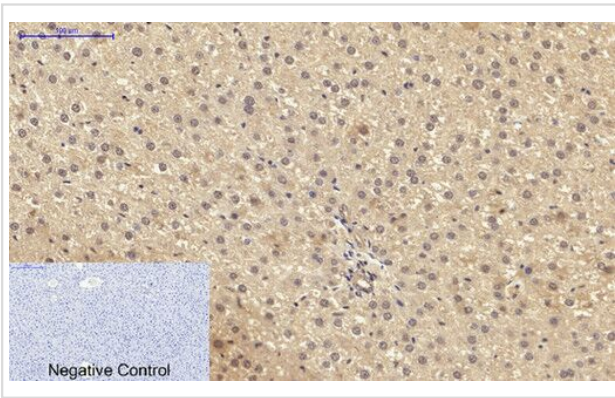
Immunohistochemical analysis of paraffin-embedded Human-stomach-cancer tissue. 1,PKC Polyclonal Antibody was diluted at 1:200(4°C,overnight). 2, Sodium citrate pH 6.0 was used for antibody retrieval(>98°C,20min). 3,Secondary antibody was diluted at 1:200(room tempeRature, 30min). Negative control was used by secondary antibody only.



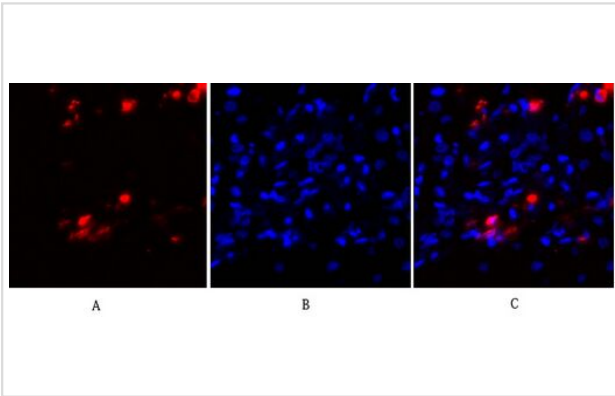
Immunohistochemical analysis of paraffin-embedded Human-uterus-cancer tissue. 1,PKC Polyclonal Antibody was diluted at 1:200(4°C,overnight). 2, Sodium citrate pH 6.0 was used for antibody retrieval(>98°C,20min). 3,Secondary antibody was diluted at 1:200(room tempeRature, 30min). Negative control was used by secondary antibody only.



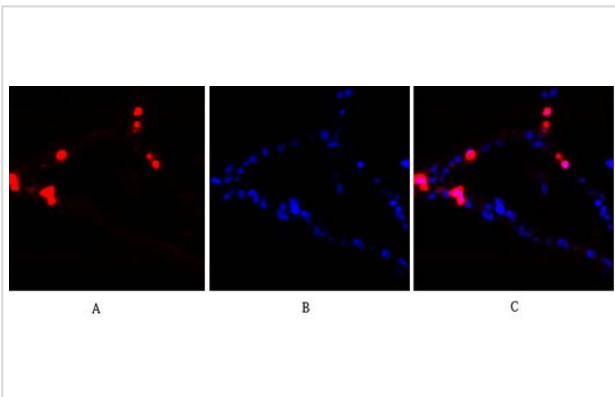
Immunohistochemical analysis of paraffin-embedded Mouse-colon tissue. 1,PKC Polyclonal Antibody was diluted at 1:200(4°C,overnight). 2, Sodium citrate pH 6.0 was used for antibody retrieval(>98°C,20min). 3,Secondary antibody was diluted at 1:200(room tempeRature, 30min). Negative control was used by secondary antibody only.



Immunohistochemical analysis of paraffin-embedded Rat-liver tissue. 1,PKC Polyclonal Antibody was diluted at 1:200(4°C,overnight). 2, Sodium citrate pH 6.0 was used for antibody retrieval(>98°C,20min). 3,Secondary antibody was diluted at 1:200(room tempeRature, 30min). Negative control was used by secondary antibody only.



Immunofluorescence analysis of human-liver tissue. 1,PKC Polyclonal Antibody(red) was diluted at 1:200(4°C,overnight). 2, Cy3 labeled Secondary antibody was diluted at 1:300(room temperature, 50min).3, Picture B: DAPI(blue) 10min. Picture A:Target. Picture B: DAPI. Picture C: merge of A+B



Immunofluorescence analysis of human-lung tissue. 1,PKC Polyclonal Antibody(red) was diluted at 1:200(4°C,overnight). 2, Cy3 labeled Secondary antibody was diluted at 1:300(room temperature, 50min).3, Picture B: DAPI(blue) 10min. Picture A:Target. Picture B: DAPI. Picture C: merge of A+B

Note: This product is for in vitro research use only