

PKC ζ Polyclonal Antibody

Catalog No: #41349

Package Size: #41349-1 50ul #41349-2 100ul

Orders: order@signalwayantibody.comSupport: tech@signalwayantibody.com

Description

Product Name	PKC ζ Polyclonal Antibody
Host Species	Rabbit
Clonality	Polyclonal
Purification	The antibody was affinity-purified from rabbit antiserum by affinity-chromatography using epitope-specific immunogen.
Applications	WB IHC IF ELISA
Species Reactivity	Hu Ms Rt Mk
Specificity	PKC ζ Polyclonal Antibody detects endogenous levels of PKC ζ protein.
Immunogen Type	peptide
Immunogen Description	Synthesized peptide derived from human PKC ζ around the non-phosphorylation site of T560.
Target Name	PKC ζ
Other Names	PRKCZ; PKC2; Protein kinase C zeta type; nPKC-zeta
Accession No.	Swiss-Prot: Q05513NCBI Gene ID: 5590
Uniprot	Q05513
GeneID	5590;
SDS-PAGE MW	80kd
Concentration	1mg/ml
Formulation	Liquid in PBS containing 50% glycerol, 0.5% BSA and 0.02% sodium azide.
Storage	Store at -20°C/1 year

Application Details

Western Blot: 1/500 - 1/2000.

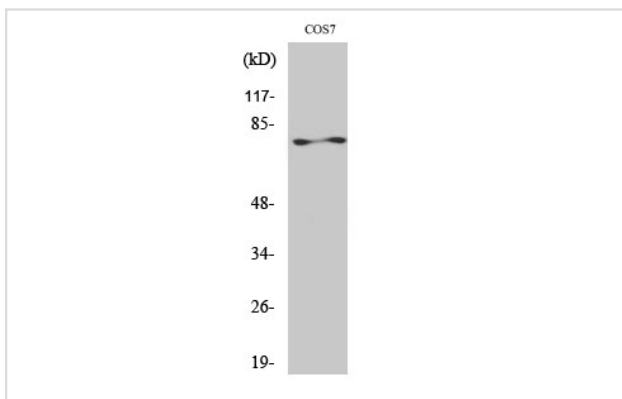
Immunohistochemistry: 1/100 - 1/300.

Immunofluorescence: 1/200 - 1/1000.

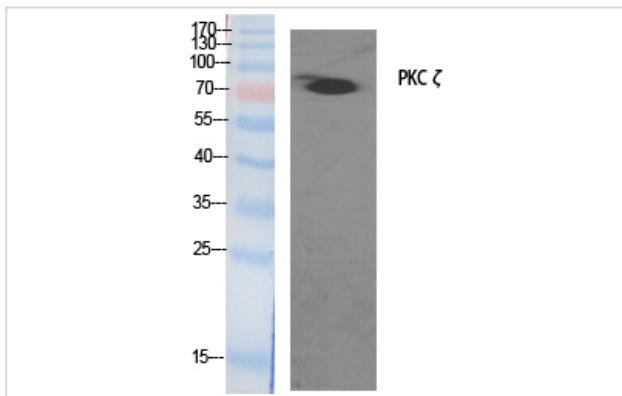
ELISA: 1/5000.

Not yet tested in other applications.

Images



Western Blot analysis of COS7 cells using PKC ζ Polyclonal Antibody



Western Blot analysis of HeLa cells using PKC ζ Polyclonal Antibody

Note: This product is for in vitro research use only