

PLC  $\beta$ 3 Polyclonal Antibody

Catalog No: #41352

Package Size: #41352-1 50ul #41352-2 100ul

Orders: [order@signalwayantibody.com](mailto:order@signalwayantibody.com)Support: [tech@signalwayantibody.com](mailto:tech@signalwayantibody.com)

## Description

Product Name	PLC $\beta$ 3 Polyclonal Antibody
Host Species	Rabbit
Clonality	Polyclonal
Purification	The antibody was affinity-purified from rabbit antiserum by affinity-chromatography using epitope-specific immunogen.
Applications	WB IHC ELISA
Species Reactivity	Hu Ms Rt
Specificity	PLC $\beta$ 3 Polyclonal Antibody detects endogenous levels of PLC $\beta$ 3 protein.
Immunogen Type	peptide
Immunogen Description	Synthesized peptide derived from human PLC $\beta$ 3 around the non-phosphorylation site of S1105.
Target Name	PLC $\beta$ 3
Other Names	PLCB3; 1-phosphatidylinositol 4; 5-bisphosphate phosphodiesterase beta-3; Phosphoinositide phospholipase C-beta-3; Phospholipase C-beta-3; PLC-beta-3
Accession No.	Swiss-Prot: Q01970NCBI Gene ID: 5331
Uniprot	Q01970
GeneID	5331;
SDS-PAGE MW	150kd
Concentration	1mg/ml
Formulation	Liquid in PBS containing 50% glycerol, 0.5% BSA and 0.02% sodium azide.
Storage	Store at -20°C/1 year

## Application Details

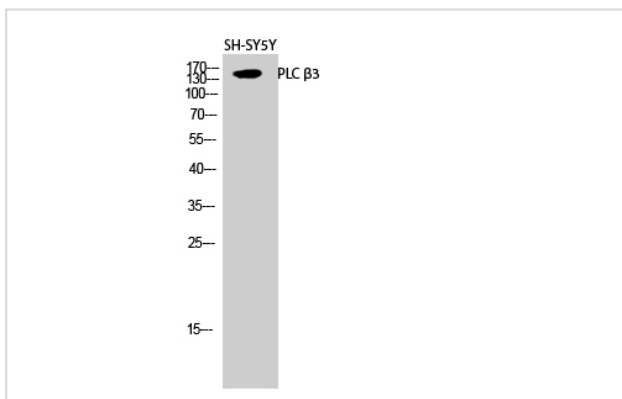
Western Blot: 1/500 - 1/2000.

Immunohistochemistry: 1/100 - 1/300.

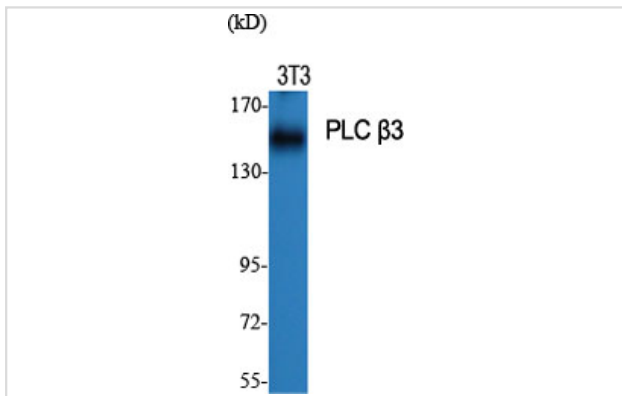
ELISA: 1/40000.

Not yet tested in other applications.

## Images



Western Blot analysis of SH-SY5Y cells using PLC  $\beta$ 3 Polyclonal Antibody



Western Blot analysis of NIH-3T3 cells using PLC  $\beta$ 3 Polyclonal Antibody

---

Note: This product is for in vitro research use only