

## ZIC2 Antibody

Catalog No: #47487

Orders: [order@signalwayantibody.com](mailto:order@signalwayantibody.com)Support: [tech@signalwayantibody.com](mailto:tech@signalwayantibody.com)

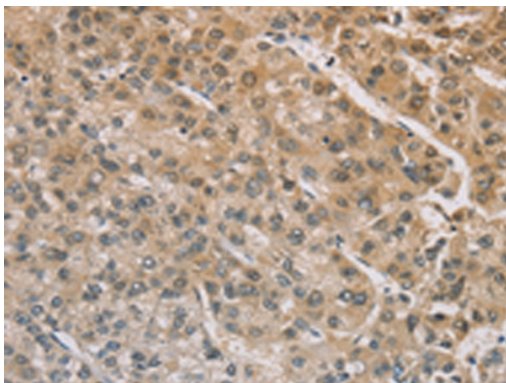
## Description

Product Name	ZIC2 Antibody
Host Species	Rabbit
Clonality	Polyclonal
Purification	Antigen affinity purification
Applications	IHC
Species Reactivity	Hu, Ms
Specificity	The antibody detects endogenous levels of total ZIC2 ? protein.
Immunogen Type	Peptide
Immunogen Description	Synthetic peptide of human ZIC2 ?
Target Name	ZIC2
Other Names	HPE5
Accession No.	Swiss-Prot#:O95409NCBI Gene ID:7546Gene Accssion:NP_009060
Uniprot	O95409
GeneID	7546;
Concentration	2
Formulation	Rabbit IgG in pH7.4 PBS, 0.05% NaN <sub>3</sub> , 40% Glycerol.
Storage	Store at -20°C

## Application Details

IHC dilution:1: 50-200

## Images



The image is immunohistochemistry of paraffin-embedded Human liver cancer tissue using 47487(ZIC2 ? Antibody) at dilution 1/100.(Original magnification: 200)

## Background

This gene encodes a member of the ZIC family of C2H2-type zinc finger proteins. This protein functions as a transcriptional repressor and may regulate tissue specific expression of dopamine receptor D1. Mutations in this gene cause holoprosencephaly type 5. Holoprosencephaly is the most common structural anomaly of the human brain. A polyhistidine tract polymorphism in this gene may be associated with increased risk of neural tube defects. This gene is closely linked to a gene encoding zinc finger protein of the cerebellum 5, a related family member on chromosome 13.

---

Note: This product is for in vitro research use only