

PLC  $\gamma$ 1 Polyclonal Antibody

Catalog No: #41353

Package Size: #41353-1 50ul #41353-2 100ul

Orders: [order@signalwayantibody.com](mailto:order@signalwayantibody.com)Support: [tech@signalwayantibody.com](mailto:tech@signalwayantibody.com)

## Description

Product Name	PLC $\gamma$ 1 Polyclonal Antibody
Host Species	Rabbit
Clonality	Polyclonal
Purification	The antibody was affinity-purified from rabbit antiserum by affinity-chromatography using epitope-specific immunogen.
Applications	WB IHC ELISA
Species Reactivity	Hu Ms Rt
Specificity	PLC $\gamma$ 1 Polyclonal Antibody detects endogenous levels of PLC $\gamma$ 1 protein.
Immunogen Type	peptide
Immunogen Description	Synthesized peptide derived from human PLC $\gamma$ 1 around the non-phosphorylation site of Y783.
Target Name	PLC $\gamma$ 1
Other Names	PLCG1; PLC1; 1-phosphatidylinositol 4; 5-bisphosphate phosphodiesterase gamma-1; PLC-148; Phosphoinositide phospholipase C-gamma-1; Phospholipase C-II; PLC-II; Phospholipase C-gamma-1; PLC-gamma-1
Accession No.	Swiss-Prot: P19174NCBI Gene ID: 5335
Uniprot	P19174
GeneID	5335;
SDS-PAGE MW	150kd
Concentration	1mg/ml
Formulation	Liquid in PBS containing 50% glycerol, 0.5% BSA and 0.02% sodium azide.
Storage	Store at -20°C/1 year

## Application Details

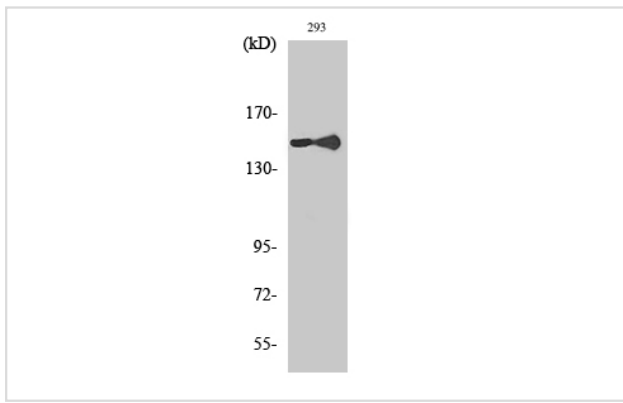
Western Blot: 1/500 - 1/2000.

Immunohistochemistry: 1/100 - 1/300.

ELISA: 1/10000.

Not yet tested in other applications.

## Images



Western Blot analysis of 293 cells using PLC  $\gamma$ 1 Polyclonal Antibody

---

Note: This product is for in vitro research use only