

PP2A-C α Polyclonal Antibody

Catalog No: #41357

Package Size: #41357-1 50ul #41357-2 100ul

Orders: order@signalwayantibody.comSupport: tech@signalwayantibody.com

Description

Product Name	PP2A-C α Polyclonal Antibody
Host Species	Rabbit
Clonality	Polyclonal
Purification	The antibody was affinity-purified from rabbit antiserum by affinity-chromatography using epitope-specific immunogen.
Applications	WB IHC IF ELISA
Species Reactivity	Hu Ms Rt
Specificity	PP2A-C α Polyclonal Antibody detects endogenous levels of PP2A-C α protein.
Immunogen Type	peptide
Immunogen Description	Synthesized peptide derived from human PP2A-C α around the non-phosphorylation site of Y307.
Target Name	PP2A-C α
Other Names	PPP2CA; Serine/threonine-protein phosphatase 2A catalytic subunit alpha isoform; PP2A-alpha; Replication protein C; RP-C
Accession No.	Swiss-Prot: P67775NCBI Gene ID: 5515
Uniprot	P67775
GeneID	5515;
SDS-PAGE MW	35kd
Concentration	1mg/ml
Formulation	Liquid in PBS containing 50% glycerol, 0.5% BSA and 0.02% sodium azide.
Storage	Store at -20°C/1 year

Application Details

Western Blot: 1/500 - 1/2000.

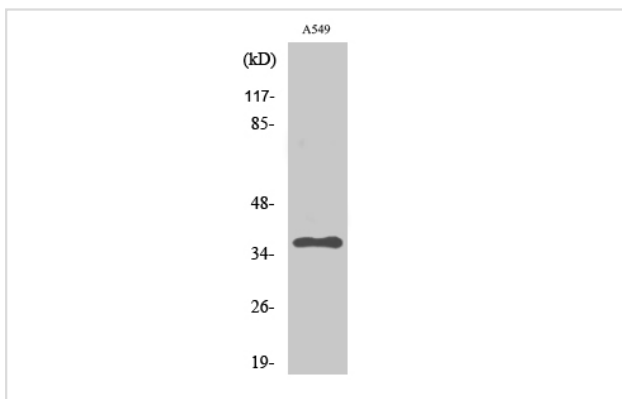
Immunohistochemistry: 1/100 - 1/300.

Immunofluorescence: 1/200 - 1/1000.

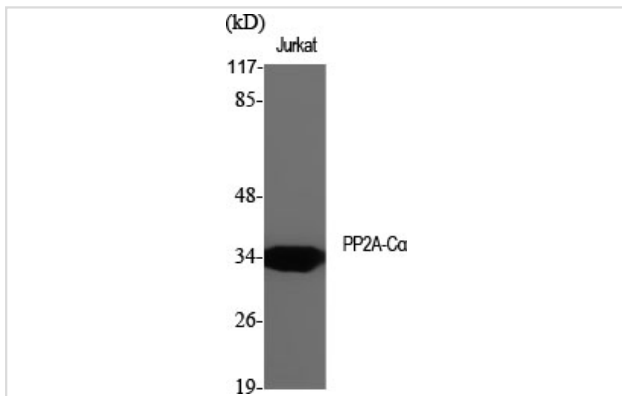
ELISA: 1/5000.

Not yet tested in other applications.

Images



Western Blot analysis of A549 cells using PP2A-C α Polyclonal Antibody



Western Blot analysis of Jurkat cells using PP2A-C α Polyclonal Antibody

Note: This product is for in vitro research use only