

FIZ1 Antibody

Catalog No: #47555

Orders: order@signalwayantibody.comSupport: tech@signalwayantibody.com

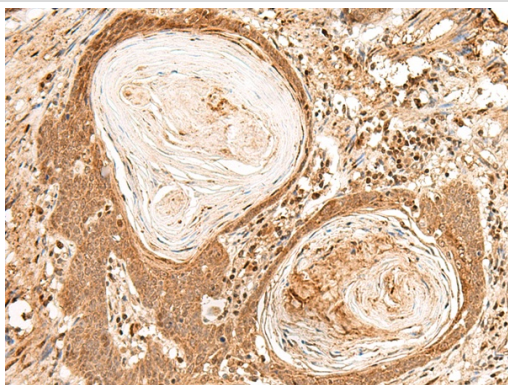
Description

Product Name	FIZ1 Antibody
Host Species	Rabbit
Clonality	Polyclonal
Purification	Antigen affinity purification
Applications	IHC
Species Reactivity	Hu, Ms
Specificity	The antibody detects endogenous levels of total FIZ1 protein.
Immunogen Type	Peptide
Immunogen Description	Synthetic peptide of human FIZ1
Target Name	FIZ1
Other Names	ZNF798
Accession No.	Swiss-Prot#:Q96SL8NCBI Gene ID:84922Gene Accssion:NP_116225
Uniprot	Q96SL8
GeneID	84922;
Concentration	1 mg/ml
Formulation	Rabbit IgG in pH7.4 PBS, 0.05% NaN ₃ , 40% Glycerol.
Storage	Store at -20°C

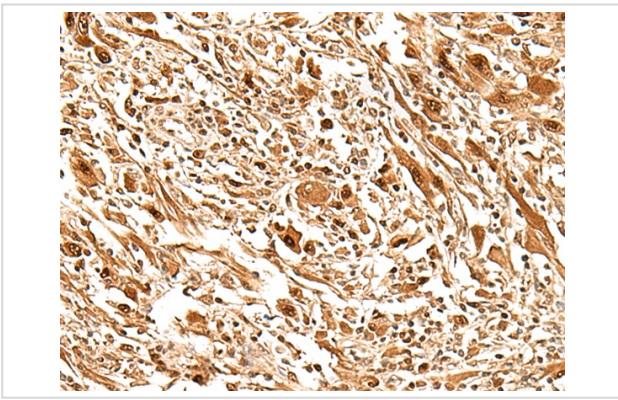
Application Details

IHC dilution:1: 40-200

Images



The image is immunohistochemistry of paraffin-embedded Human esophagus cancer tissue using 47555(FIZ1 Antibody) at dilution 1/35.(Original magnification: 200)



The image is immunohistochemistry of paraffin-embedded Human liver cancer tissue using 47555(FIZ1 Antibody) at dilution 1/35.(Original magnification: 200)

Background

This gene encodes zinc finger protein, which interacts with a receptor tyrosine kinase involved in the regulation of hematopoietic and lymphoid cells. This gene product also interacts with a transcription factor that regulates the expression of rod-specific genes in retina.

Note: This product is for in vitro research use only