

## PSCA Polyclonal Antibody

Catalog No: #41364

Package Size: #41364-1 50ul #41364-2 100ul

Orders: [order@signalwayantibody.com](mailto:order@signalwayantibody.com)Support: [tech@signalwayantibody.com](mailto:tech@signalwayantibody.com)

## Description

Product Name	PSCA Polyclonal Antibody
Host Species	Rabbit
Clonality	Polyclonal
Purification	The antibody was affinity-purified from rabbit antiserum by affinity-chromatography using epitope-specific immunogen.
Applications	WB ELISA
Species Reactivity	Hu Ms
Specificity	PSCA Polyclonal Antibody detects endogenous levels of PSCA protein.
Immunogen Type	peptide
Immunogen Description	Synthesized peptide derived from the Internal region of human PSCA.
Target Name	PSCA
Other Names	PSCA; Prostate stem cell antigen
Accession No.	Swiss-Prot: O43653NCBI Gene ID: 8000
Uniprot	O43653
GeneID	8000;
SDS-PAGE MW	29kd
Concentration	1mg/ml
Formulation	Liquid in PBS containing 50% glycerol, 0.5% BSA and 0.02% sodium azide.
Storage	Store at -20°C/1 year

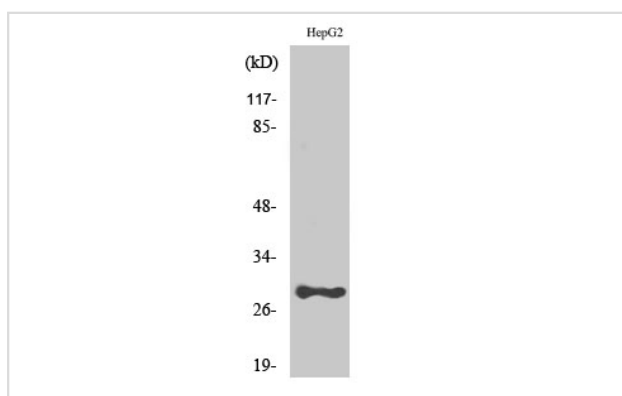
## Application Details

Western Blot: 1/500 - 1/2000.

ELISA: 1/20000.

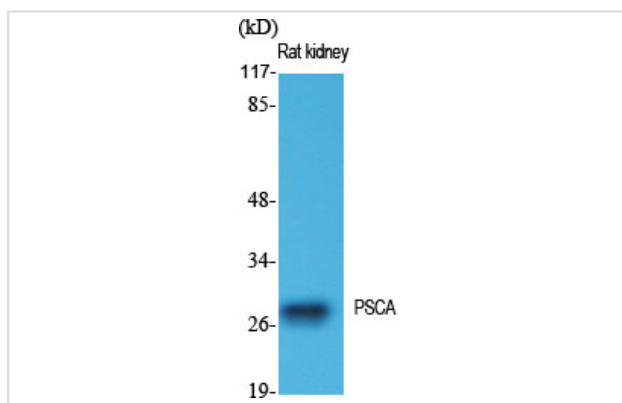
Not yet tested in other applications.

## Images



Western Blot analysis of HepG2 cells using PSCA Polyclonal Antibody

Western Blot analysis of RAT-KIDNEY cells using PSCA Polyclonal Antibody



Note: This product is for in vitro research use only