

PSD-95 Polyclonal Antibody

Catalog No: #41365

Package Size: #41365-1 50ul #41365-2 100ul

Orders: order@signalwayantibody.comSupport: tech@signalwayantibody.com

Description

Product Name	PSD-95 Polyclonal Antibody
Host Species	Rabbit
Clonality	Polyclonal
Purification	The antibody was affinity-purified from rabbit antiserum by affinity-chromatography using epitope-specific immunogen.
Applications	WB ELISA
Species Reactivity	Hu Ms Rt
Specificity	PSD-95 Polyclonal Antibody detects endogenous levels of PSD-95 protein.
Immunogen Type	peptide
Immunogen Description	Synthesized peptide derived from human PSD-95 around the non-phosphorylation site of S295.
Target Name	PSD-95
Other Names	DLG4; PSD95; Disks large homolog 4; Postsynaptic density protein 95; PSD-95; Synapse-associated protein 90; SAP-90; SAP90
Accession No.	Swiss-Prot: P78352NCBI Gene ID: 1742
Uniprot	P78352
GeneID	1742;
SDS-PAGE MW	95kd
Concentration	1mg/ml
Formulation	Liquid in PBS containing 50% glycerol, 0.5% BSA and 0.02% sodium azide.
Storage	Store at -20°C/1 year

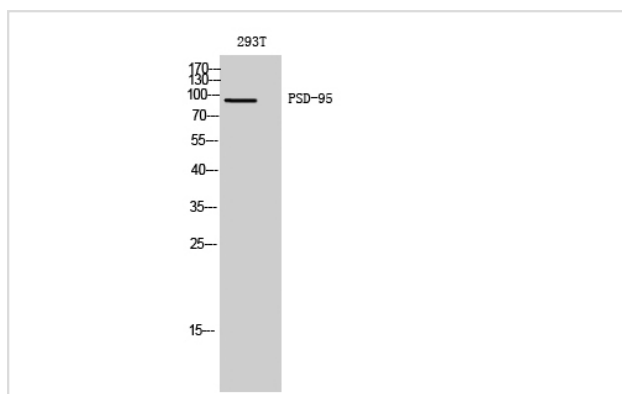
Application Details

Western Blot: 1/500 - 1/2000.

ELISA: 1/10000.

Not yet tested in other applications.

Images



Western Blot analysis of 293T cells using PSD-95 Polyclonal Antibody

Note: This product is for in vitro research use only