

## ISM1 Antibody

Catalog No: #47668

Orders: [order@signalwayantibody.com](mailto:order@signalwayantibody.com)Support: [tech@signalwayantibody.com](mailto:tech@signalwayantibody.com)

## Description

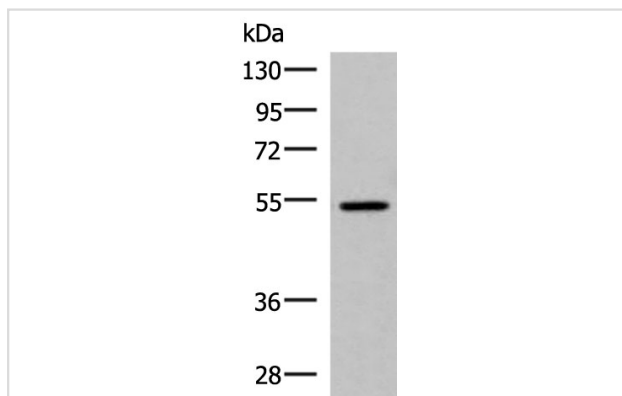
Product Name	ISM1 Antibody
Host Species	Rabbit
Clonality	Polyclonal
Purification	Antigen affinity purification
Applications	WB, IHC
Species Reactivity	Hu, Ms
Specificity	The antibody detects endogenous levels of total ISM1 protein.
Immunogen Type	Peptide
Immunogen Description	Synthetic peptide of human ISM1
Target Name	ISM1
Other Names	ISM; Isthmin; C20orf82; bA149I18.1; dJ1077I2.1
Accession No.	Swiss-Prot#:B1AKI9NCBI Gene ID:140862Gene Accssion:NP_543016
Uniprot	B1AKI9
GeneID	140862;
Calculated MW	52 kDa
Concentration	1.8 mg/ml
Formulation	Rabbit IgG in pH7.4 PBS, 0.05% NaN <sub>3</sub> , 40% Glycerol.
Storage	Store at -20°C

## Application Details

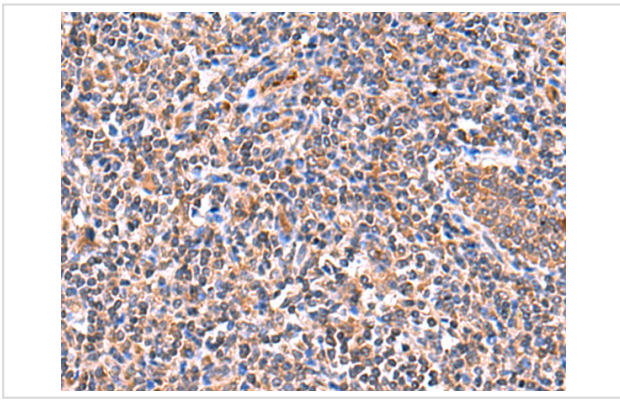
WB dilution:1:1000-5000

IHC dilution:1: 50-300

## Images



Gel: 8%SDS-PAGE, Lysate: 40  $\mu$ g, Lane: HepG2 cell lysate,  
Primary antibody:47668(ISM1 Antibody) at dilution 1/1000,  
Secondary antibody: Goat anti rabbit IgG at 1/5000 dilution,  
Exposure time: 7 seconds



The image is immunohistochemistry of paraffin-embedded Human tonsil tissue using 47668 (ISM1 Antibody) at dilution 1/60. (Original magnification: 200)

## Background

Acts as an angiogenesis inhibitor.

Note: This product is for in vitro research use only