

## PTTG1/2/3 Polyclonal Antibody

Catalog No: #41371

Package Size: #41371-1 50ul #41371-2 100ul

Orders: [order@signalwayantibody.com](mailto:order@signalwayantibody.com)Support: [tech@signalwayantibody.com](mailto:tech@signalwayantibody.com)

## Description

Product Name	PTTG1/2/3 Polyclonal Antibody
Host Species	Rabbit
Clonality	Polyclonal
Purification	The antibody was affinity-purified from rabbit antiserum by affinity-chromatography using epitope-specific immunogen.
Applications	WB IHC IF ELISA
Species Reactivity	Hu
Specificity	PTTG1/2/3 Polyclonal Antibody detects endogenous levels of PTTG1/2/3 protein.
Immunogen Type	peptide
Immunogen Description	Synthesized peptide derived from the Internal region of human PTTG1/2/3.
Target Name	PTTG1/2/3
Other Names	PTTG1; EAP1; PTTG; TUTR1; Securin; Esp1-associated protein; Pituitary tumor-transforming gene 1 protein; Tumor-transforming protein 1; hPTTG
Accession No.	Swiss-Prot: O95997NCBI Gene ID: 9232
Uniprot	O95997
GeneID	9232;
SDS-PAGE MW	30kd
Concentration	1mg/ml
Formulation	Liquid in PBS containing 50% glycerol, 0.5% BSA and 0.02% sodium azide.
Storage	Store at -20°C/1 year

## Application Details

Western Blot: 1/500 - 1/2000.

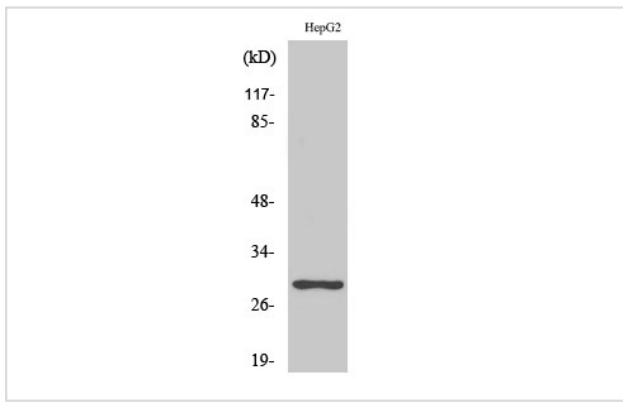
Immunohistochemistry: 1/100 - 1/300.

Immunofluorescence: 1/200 - 1/1000.

ELISA: 1/20000.

Not yet tested in other applications.

## Images



Western Blot analysis of 293 cells using PTTG1/2/3 Polyclonal Antibody

---

Note: This product is for in vitro research use only